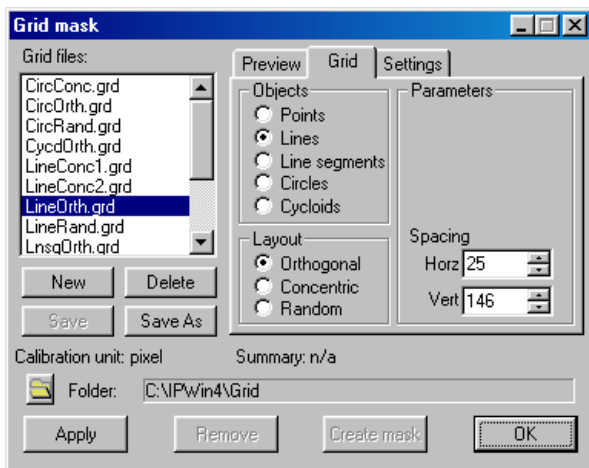
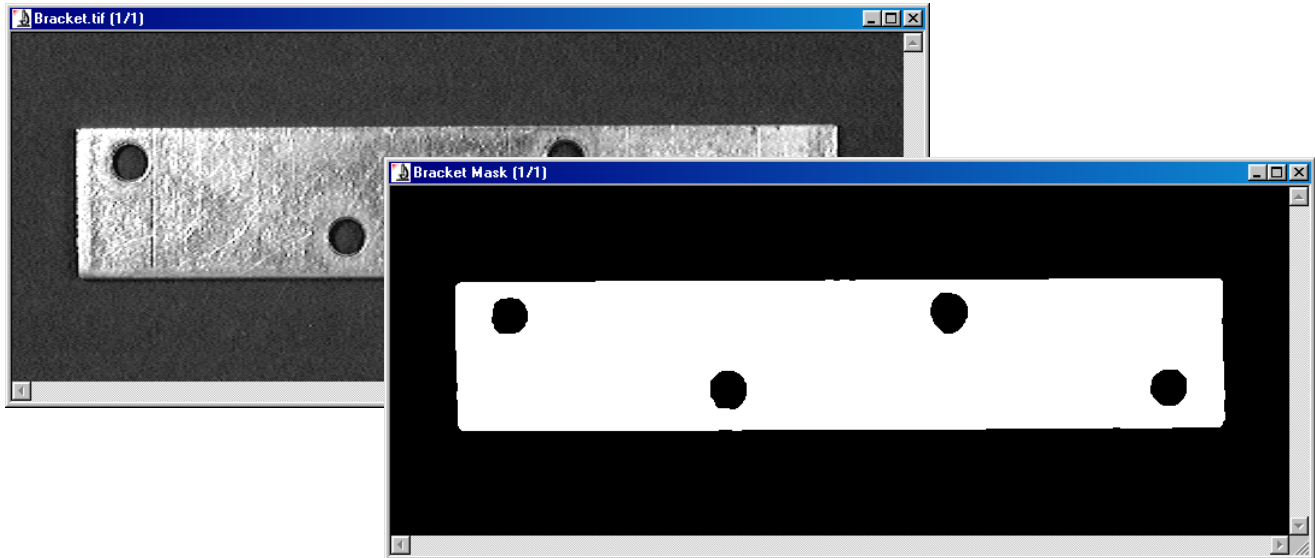
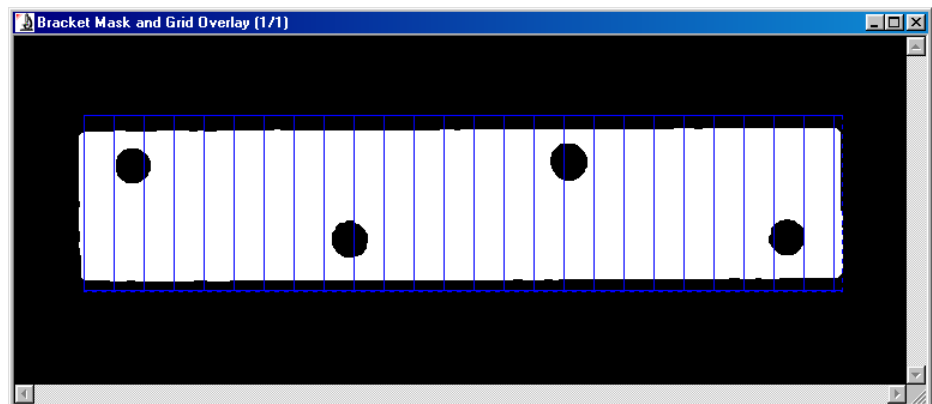


Measurements using the Grid Mask Feature

In addition to the manual measurement tools, another possible way to obtain measurements is by using a grid mask. The Bracket image was first thresholded to select the region of the bracket and a binary image or mask was created based upon the threshold values.

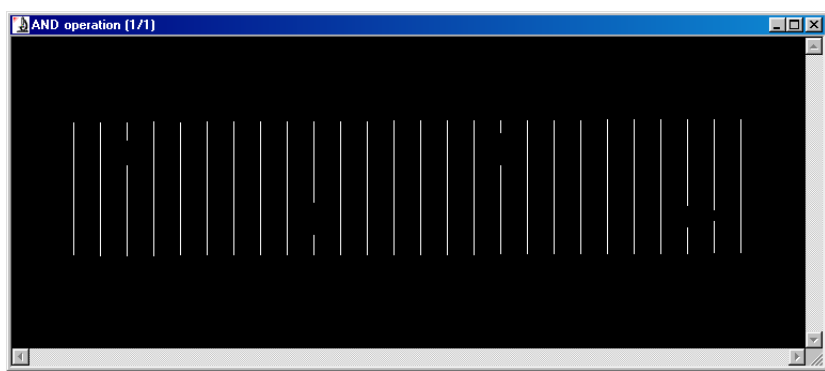
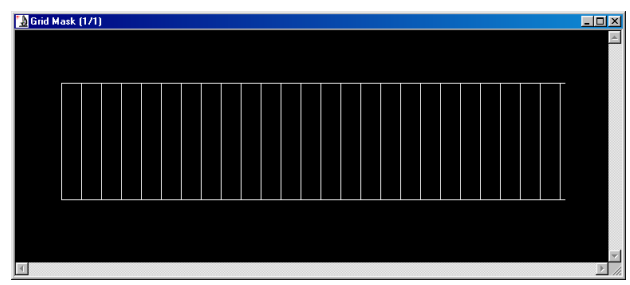
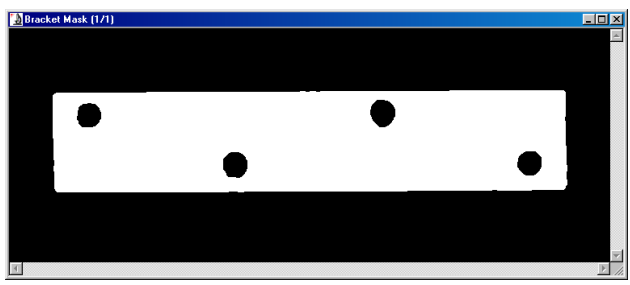


Next, a grid pattern of Orthogonal Lines was chosen and adjusted using the Grid Mask dialog box. A wide variety of grid patterns is available and can be viewed as overlays on the image. Below, the created grid is shown as an overlay on the binary image of the bracket.





A Boolean AND operation was applied between the Bracket Mask and the Grid Mask. The resulting new image contained the portions of the Grid Mask and the Bracket Mask that were common to both images – line segments extending across and defining the dimensions of the bracket.



The use of the Grid Mask and a Boolean operator allowed an Automatic Bright Object count of the line segments, shown here in terms of their lengths in pixels.

