

PRIOR

S c i e n t i f i c

Product Part Number Reference Sheet by Microscope

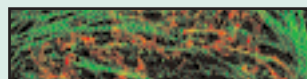


Table of Contents

LEICA **PAGE**

| | |
|----------------------------------|----|
| Leica DM2500..... | 3 |
| Leica DM 4000/5000/6000..... | 4 |
| Leica DMI 3000B/4000B/5000B..... | 5 |
| Leica DMI 6000B..... | 6 |
| Leica DMIL/DMIL HC..... | 7 |
| Leica DMIR/DMIRB..... | 8 |
| Leica DMIR HC..... | 9 |
| Leica DMIR2..... | 10 |
| Leica DMLB..... | 11 |
| Leica DMLM..... | 12 |
| Leica DMR..... | 13 |
| Leica INM100..... | 14 |
| Leica INM200/INM300..... | 15 |
| Leica MZ Stereo..... | 16 |

MITUTOYO **PAGE**

| | |
|---------------------|----|
| Mitutoyo FS70..... | 17 |
| Mitutoyo FS110..... | 18 |

NIKON **PAGE**

| | |
|-----------------------------|----|
| Nikon 50i..... | 19 |
| Nikon 80i..... | 20 |
| Nikon 90i..... | 21 |
| Nikon AZ100..... | 22 |
| Nikon Diaphot 300..... | 23 |
| Nikon Diaphot TMD..... | 24 |
| Nikon E400..... | 25 |
| Nikon E600..... | 26 |
| Nikon E600FN..... | 27 |
| Nikon E800..... | 28 |
| Nikon E800M..... | 29 |
| Nikon E1000..... | 30 |
| Nikon E1000M..... | 31 |
| Nikon FN1..... | 32 |
| Nikon L150..... | 33 |
| Nikon L200/LV200..... | 34 |
| Nikon LV100..... | 35 |
| Nikon LV150..... | 36 |
| Nikon MM40/3 & MM60/L3..... | 37 |
| Nikon OptiPhot300/L300..... | 38 |

NIKON **PAGE**

| | |
|----------------------------|----|
| Nikon SMZ 1500 Stereo..... | 39 |
| Nikon TE300..... | 40 |
| Nikon TE2000..... | 41 |
| Nikon Ti..... | 42 |
| Nikon TS100..... | 43 |

OLYMPUS **PAGE**

| | |
|---------------------------|----|
| Olympus AX70..... | 44 |
| Olympus AX80..... | 45 |
| Olympus BX40/50/60..... | 46 |
| Olympus BX41..... | 47 |
| Olympus BX51..... | 48 |
| Olympus BX51WI..... | 49 |
| Olympus BX61..... | 50 |
| Olympus GX51/GX71..... | 51 |
| Olympus IX50/IX70..... | 52 |
| Olympus IX51/IX71..... | 53 |
| Olympus IX81/IX81ZDC..... | 54 |
| Olympus MX40..... | 55 |
| Olympus MX50..... | 56 |
| Olympus MX50L..... | 57 |
| Olympus MX61..... | 58 |
| Olympus MX61L..... | 59 |
| Olympus MX80..... | 60 |
| Olympus SZX Stereo..... | 61 |
| Olympus SZX12/MVX10..... | 62 |

ZEISS **PAGE**

| | |
|--|----|
| Zeiss Axio Imager..... | 63 |
| Zeiss Axiophot2..... | 64 |
| Zeiss Axioplan 2/Axioplan 2 Imaging..... | 65 |
| Zeiss Axioskop 2/Axioskop 40..... | 66 |
| Zeiss Axioskop2FS..... | 67 |
| Zeiss Axiotron..... | 68 |
| Zeiss Axiovert 10/35/35M/405M..... | 69 |
| Zeiss Axiovert 25/25C/25CFI/40..... | 70 |
| Zeiss Axiovert 25CA..... | 71 |
| Zeiss Axiovert 100/135..... | 72 |
| Zeiss Axiovert 200..... | 73 |
| Zeiss Axio Observer..... | 74 |

MOTORIZED STAGE (XY):

Stage Part Number: H101ANNN
 Specimen Holders: H224 (1x3 slide holder)
 Limit Switches: Adjustable
 Ball Screws: 2mm pitch

ENCODED STAGE (XY):

Stage Part Number: H101ANN1* (0.1 µm resolution)
 Specimen Holders: H224 (1x3 slide holder)
 Limit Switches: Adjustable
 Ball Screws: 2mm pitch

*Note: Requires encoder option for controller.

Notes: 1. Other specimen holders available (see price list).
 2. 1mm pitch screws are available as an option.

MOTORIZED FOCUS CONTROL (Z):

Focus Motor: H122
 Focus Sleeve: H2754
 Solid Coupler Kit: H122KLC

FOCUS MOTOR WITH LINEAR ENCODER PROBE:

Focus Motor: H122EK* (50 nanometer resolution)
 Focus Sleeve: H2754
 Solid Coupler Kit: H122KLC

*Note: Requires adapter sleeve and encoder option for controller.

FILTER WHEEL AND SHUTTERS:

| Application | Adapter | Filter Wheel ^A | Shutter (on Filter Wheel) | Shutter (Stand Alone) |
|------------------|-------------|---------------------------|------------------------------|--------------------------|
| Excitation, 25mm | HF215 | HF110 | HF200HT | HF202HT |
| Excitation, 35mm | HF215 | HF108 | HF201HT | HF204HT |
| Emission | Please Call | HF110 | N/A | N/A |
| Transmitted | Please Call | N/A | N/A | HF204HT |

^A HF110 has ten positions, the HF108 has eight positions.

STAND ALONE CONTROLLER:

H30Z Focus only
 H30XY Stage only
 H30XYZ Stage and focus drive
 Autofocus: Replace "Z" with "A" e.g. H30A
 1 filter wheel, 3 shutters: Add "1" e.g. H30XYZ1
 2 filter wheel, 3 shutters: Add "2" e.g. H30XYZ2
 3 filter wheel, 3 shutters: Add "3" e.g. H30XYZ3
 3 shutter only: Add "5" e.g. H30XYZ5
 Encoder input: Add "E" e.g. H30XYE

Note: H130 Controllers include stage cable and PC RS232 cable.

PCI CARD CONTROLLER: (REQUIRES CUSTOMER SUPPLIED PC)

HP2PC1 PCI control for XY, focus, three filter wheels and analog 0-10V NanoScanZ Piezo control
 HP2ETL PCI slot adapter for encoders and TTL
 HP1ENC Encoder adapter cable

JOYSTICKS:

CS152Z Digipot Control Unit for Z only
 CS152V2 Joystick Control Unit for XY system
 CS152EF Joystick Control Unit for XY and Digipot for Z
 CS152KB Programmable touch screen controller (H130 Only)
 CS100K Manual keypad control for 2 filter wheels and 3 shutters (H130 Only)

LEICA DM4000/5000/6000 (114MM X 75MM TRAVEL)

LEICA DM4000/5000/6000 (114MM X 75MM TRAVEL)

MOTORIZED STAGE (XY):

Stage Part Number: H101ANNN
Specimen Holders: H224 (1x3 slide holder)
Limit Switches: Adjustable
Ball Screws: 2mm pitch

ENCODED STAGE (XY):

Stage Part Number: H101ANN1* (0.1 µm resolution)
Specimen Holders: H224 (1x3 slide holder)
Limit Switches: Adjustable
Ball Screws: 2mm pitch

*Note: Requires encoder option for controller.

Notes: 1. Other specimen holders available (see price list).
2. 1mm pitch screws are available as an option.

MOTORIZED FOCUS CONTROL (Z):

Focus Motor: H122
Focus Sleeve: H2581
Solid Coupler Kit: H122KLC

FOCUS MOTOR WITH LINEAR ENCODER PROBE:

Focus Motor: H122EK* (50 nanometer resolution)
Focus Sleeve: H2581
Solid Coupler Kit: H122KLC

*Note: Requires adapter sleeve and encoder option for controller.

FILTER WHEEL AND SHUTTERS:

| Application | Adapter | Filter Wheel ^Δ | Shutter (on Filter Wheel) | Shutter (Stand Alone) |
|------------------|-------------|---------------------------|------------------------------|--------------------------|
| Excitation, 25mm | HF215 | HF110 | HF200HT | HF202HT |
| Excitation, 35mm | HF215 | HF108 | HF201HT | HF204HT |
| Emission | Please Call | HF110 | N/A | N/A |
| Transmitted | HF215 | N/A | N/A | HF204HT |

^Δ HF110 has ten positions, the HF108 has eight positions.

STAND ALONE CONTROLLER:

H30Z Focus only
H30XY Stage only
H30XYZ Stage and focus drive
Autofocus: Replace "Z" with "A" e.g. H30A
1 filter wheel, 3 shutters: Add "1" e.g. H30XYZ1
2 filter wheel, 3 shutters: Add "2" e.g. H30XYZ2
3 filter wheel, 3 shutters: Add "3" e.g. H30XYZ3
3 shutter only: Add "5" e.g. H30XYZ5
Encoder input: Add "E" e.g. H30XYE

Note: H130 Controllers include stage cable and PC RS232 cable.

JOYSTICKS:

CS152Z Digipot Control Unit for Z only
CS152V2 Joystick Control Unit for XY system
CS152EF Joystick Control Unit for XY and Digipot for Z
CS152KB Programmable touch screen controller (H130 Only)
CS100K Manual keypad control for 2 filter wheels and 3 shutters (H130 Only)

PCI CARD CONTROLLER: (REQUIRES CUSTOMER SUPPLIED PC)

HP2PC1 PCI control for XY, focus, three filter wheels and analog 0-10V NanoScanZ Piezo control
HP2ETL PCI slot adapter for encoders and TTL
HP1ENC Encoder adapter cable

LEICA DMI 3000/4000/5000 (114MM X 75MM TRAVEL)

MOTORIZED STAGE (XY):

Stage Part Number: H117P2DM
 Specimen Holders: H224R (1x3 slide holder)
 H223XR (well plate holder)
 H229 (variable petri dish holder)
 Limit Switches: Adjustable
 Ball Screws: 2mm pitch

ENCODED STAGE (XY):

Stage Part Number: H117E2DM* (0.1 µm resolution)
 Specimen Holders: H224R (1x3 slide holder)
 H223XR (well plate holder)
 H229 (variable petri dish holder)
 Limit Switches: Adjustable
 Ball Screws: 2mm pitch

*Note: Requires encoder option for controller.

Notes: 1. Other specimen holders available (see price list).
 2. 1mm pitch screws are available as an option.

MOTORIZED FOCUS CONTROL (Z):

Focus Motor: H122
 Focus Sleeve: H2581
 Solid Coupler Kit: Please Call

FOCUS MOTOR WITH LINEAR ENCODER PROBE:

Focus Motor: Please Call
 Focus Sleeve: Please Call
 Solid Coupler Kit: Please Call

FILTER WHEEL AND SHUTTERS:

| Application | Adapter | Filter Wheel ^A | Shutter (on Filter Wheel) | Shutter (Stand Alone) |
|------------------|-------------|---------------------------|------------------------------|--------------------------|
| Excitation, 25mm | HF215 | HF110 | HF200HT | HF202HT |
| Excitation, 35mm | HF215 | HF108 | HF201HT | HF204HT |
| Emission | Please Call | HF110 | N/A | N/A |
| Transmitted | Please Call | N/A | N/A | HF204HT |

^A HF110 has ten positions, the HF108 has eight positions.

STAND ALONE CONTROLLER:

H30Z Focus only
 H30XY Stage only
 H30XYZ Stage and focus drive
 Autofocus: Replace "Z" with "A" e.g. H30A
 1 filter wheel, 3 shutters: Add "1" e.g. H30XYZ1
 2 filter wheel, 3 shutters: Add "2" e.g. H30XYZ2
 3 filter wheel, 3 shutters: Add "3" e.g. H30XYZ3
 3 shutter only: Add "5" e.g. H30XYZ5
 Encoder input: Add "E" e.g. H30XYE

Note: H130 Controllers include stage cable and PC RS232 cable.

PCI CARD CONTROLLER: (REQUIRES CUSTOMER SUPPLIED PC)

HP2PC1 PCI control for XY, focus, three filter wheels and analog 0-10V NanoScanZ Piezo control
 HP2ETL PCI slot adapter for encoders and TTL
 HP1ENC Encoder adapter cable

JOYSTICKS:

CS152Z Digipot Control Unit for Z only
 CS152V2 Joystick Control Unit for XY system
 CS152EF Joystick Control Unit for XY and Digipot for Z
 CS152KB Programmable touch screen controller (H130 Only)
 CS100K Manual keypad control for 2 filter wheels and 3 shutters (H130 Only)

LEICA DMI 6000B (114MM X 75MM TRAVEL)

MOTORIZED STAGE (XY):

Stage Part Number: H117P2DM
 Specimen Holders: H224R (1x3 slide holder)
 H223XR (well plate holder)
 H229 (variable petri dish holder)
 Limit Switches: Adjustable
 Ball Screws: 2mm pitch

ENCODED STAGE (XY):

Stage Part Number: H117E2DM* (0.1 µm resolution)
 Specimen Holders: H224R (1x3 slide holder)
 H223XR (well plate holder)
 H229 (variable petri dish holder)
 Limit Switches: Adjustable
 Ball Screws: 2mm pitch

*Note: Requires encoder option for controller.

Notes: 1. Other specimen holders available (see price list).
 2. 1mm pitch screws are available as an option.

MOTORIZED FOCUS CONTROL (Z):

Not available

FOCUS MOTOR WITH LINEAR ENCODER PROBE:

Not available

FILTER WHEEL AND SHUTTERS:

| Application | Adapter | Filter Wheel ^A | Shutter (on Filter Wheel) | Shutter (Stand Alone) |
|------------------|-------------|---------------------------|------------------------------|--------------------------|
| Excitation, 25mm | HF215 | HF110 | HF200HT | HF202HT |
| Excitation, 35mm | HF215 | HF108 | HF201HT | HF204HT |
| Emission | Please Call | HF110 | N/A | N/A |
| Transmitted | Please Call | N/A | N/A | HF204HT |

^A HF110 has ten positions, the HF108 has eight positions.

STAND ALONE CONTROLLER:

H30Z Focus only
 H30XY Stage only
 H30XYZ Stage and focus drive
 Autofocus: Replace "Z" with "A" e.g. 30A
 1 filter wheel, 3 shutters: Add "1" e.g. H30XYZ1
 2 filter wheel, 3 shutters: Add "2" e.g. H30XYZ2
 3 filter wheel, 3 shutters: Add "3" e.g. H30XYZ3
 3 shutter only: Add "5" e.g. H30XYZ5
 Encoder input: Add "E" e.g. H30XYE

Note: H130 Controllers include stage cable and PC RS232 cable.

PCI CARD CONTROLLER: (REQUIRES CUSTOMER SUPPLIED PC)

HP2PC1 PCI control for XY, focus, three filter wheels and analog 0-10V NanoScanZ Piezo control
 HP2ETL PCI slot adapter for encoders and TTL
 HP1ENC Encoder adapter cable

JOYSTICKS:

CS152Z Digipot Control Unit for Z only
 CS152V2 Joystick Control Unit for XY system
 CS152EF Joystick Control Unit for XY and Digipot for Z
 CS152KB Programmable touch screen controller (H130 Only)
 CS100K Manual keypad control for 2 filter wheels and 3 shutters (H130 Only)

LEICA DMIL/DMIL HC (112MM X 70MM TRAVEL)

MOTORIZED STAGE (XY):

Stage Part Number: H107ABNN
 Specimen Holders: H224R (1x3 slide holder)
 H223R (well plate holder)
 H229 (variable petri dish holder)
 Limit Switches: Adjustable
 Ball Screws: 2mm pitch

ENCODED STAGE (XY):

Stage Part Number: Please call for more information
 Specimen Holders: H224R (1x3 slide holder)
 H223R (well plate holder)
 H229 (variable petri dish holder)
 Limit Switches: Adjustable
 Ball Screws: 2mm pitch
 *Note: Requires encoder option for controller.

Notes: 1. Other specimen holders available (see price list). Use “R” versions where available.
 2. 1mm pitch screws are available as an option.

MOTORIZED FOCUS CONTROL (Z):

Focus Motor: H122
 Focus Sleeve: H554
 Solid Coupler Kit: H122KLC

FOCUS MOTOR WITH LINEAR ENCODER PROBE:

Focus Motor: Please Call
 Focus Sleeve: H554
 Solid Coupler Kit: H122KLC

FILTER WHEEL AND SHUTTERS:

| Application | Adapter | Filter Wheel [^] | Shutter (on Filter Wheel) | Shutter (Stand Alone) |
|------------------|-------------|---------------------------|------------------------------|--------------------------|
| Excitation, 25mm | HF215 | HF110 | HF200HT | HF202HT |
| Excitation, 35mm | HF215 | HF108 | HF201HT | HF204HT |
| Emission | Please Call | HF110 | N/A | N/A |
| Transmitted | Please Call | N/A | N/A | HF204HT |

[^] HF110 has ten positions, the HF108 has eight positions.

STAND ALONE CONTROLLER:

H30Z Focus only
 H30XY Stage only
 H30XYZ Stage and focus drive
 Autofocus: Replace “Z” with “A” e.g. H30A
 1 filter wheel, 3 shutters: Add “1” e.g. H30XYZ1
 2 filter wheel, 3 shutters: Add “2” e.g. H30XYZ2
 3 filter wheel, 3 shutters: Add “3” e.g. H30XYZ3
 3 shutter only: Add “5” e.g. H30XYZ5
 Encoder input: Add “E” e.g. H30XYE

Note: H130 Controllers include stage cable and PC RS232 cable.

PCI CARD CONTROLLER: (REQUIRES CUSTOMER SUPPLIED PC)

HP2PC1 PCI control for XY, focus, three filter wheels and analog 0-10V NanoScanZ Piezo control
 HP2ETL PCI slot adapter for encoders and TTL
 HP1ENC Encoder adapter cable

JOYSTICKS:

CS152Z Digipot Control Unit for Z only
 CS152V2 Joystick Control Unit for XY system
 CS152EF Joystick Control Unit for XY and digipot for Z
 CS152KB Programmable touch screen controller - H130 only
 CS100K Manual keypad control for 2 filter wheels and 3 shutters - H130 only

LEICA DMIR/DMIRB (114MM X 75MM TRAVEL)

MOTORIZED STAGE (XY):

Stage Part Number: H117P2DM
 Specimen Holders: H224R (1x3 slide holder)
 H223XR (well plate holder)
 H229 (variable petri dish holder)
 Limit Switches: Adjustable
 Ball Screws: 2mm pitch

ENCODED STAGE (XY):

Stage Part Number: H117E2DM* (0.1 µm resolution)
 Specimen Holders: H224R (1x3 slide holder)
 H223XR (well plate holder)
 H229 (variable petri dish holder)
 Limit Switches: Adjustable
 Ball Screws: 2mm pitch

*Note: Requires encoder option for controller.

Notes: 1. Other specimen holders available (see price list). Use “R” versions where available.
 2. 1mm pitch screws are available as an option.

MOTORIZED FOCUS CONTROL (Z):

Focus Motor: H122
 Focus Sleeve: H968
 Solid Coupler Kit: H122KLC

FOCUS MOTOR WITH LINEAR ENCODER PROBE:

Focus Motor: H122EK (50 nanometer resolution)
 Focus Sleeve: H968
 Solid Coupler Kit: H122KLC

FILTER WHEEL AND SHUTTERS:

| Application | Adapter | Filter Wheel ^A | Shutter (on Filter Wheel) | Shutter (Stand Alone) |
|------------------|---------|---------------------------|------------------------------|--------------------------|
| Excitation, 25mm | HF215 | HF110 | HF200HT | HF202HT |
| Excitation, 35mm | HF215 | HF108 | HF201HT | HF204HT |
| Emission | HF217 | HF110 | N/A | N/A |
| Transmitted | HF215 | N/A | N/A | HF204HT |

^A HF110 has ten positions, the HF108 has eight positions.

STAND ALONE CONTROLLER:

H30Z Focus only
 H30XY Stage only
 H30XYZ Stage and focus drive
 Autofocus: Replace “Z” with “A” e.g. H30A
 1 filter wheel, 3 shutters: Add “1” e.g. H30XYZ1
 2 filter wheel, 3 shutters: Add “2” e.g. H30XYZ2
 3 filter wheel, 3 shutters: Add “3” e.g. H30XYZ3
 3 shutter only: Add “5” e.g. H30XYZ5
 Encoder input: Add “E” e.g. H30XYE

Note: H130 Controllers include stage cable and PC RS232 cable.

PCI CARD CONTROLLER: (REQUIRES CUSTOMER SUPPLIED PC)

HP2PC1 PCI control for XY, focus, three filter wheels and analog 0-10V NanoScanZ Piezo control
 HP2ETL PCI slot adapter for encoders and TTL
 HP1ENC Encoder adapter cable

JOYSTICKS:

CS152Z DigiPot Control Unit for Z only
 CS152V2 Joystick Control Unit for XY system
 CS152EF Joystick Control Unit for XY and digipot for Z
 CS152KB Programmable touch screen controller - H130 only
 CS100K Manual keypad control for 2 filter wheels and 3 shutters - H130 only

LEICA DMIR HC (114MM X 75MM TRAVEL)

MOTORIZED STAGE (XY):

Stage Part Number: H117P2DM
 Specimen Holders: H224R (1x3 slide holder)
 H223XR (well plate holder)
 H229 (variable petri dish holder)
 Limit Switches: Adjustable
 Ball Screws: 2mm pitch

ENCODED STAGE (XY):

Stage Part Number: H117E2DM* (0.1 µm resolution)
 Specimen Holders: H224R (1x3 slide holder)
 H223XR (well plate holder)
 H229 (variable petri dish holder)
 Limit Switches: Adjustable
 Ball Screws: 2mm pitch

*Note: Requires encoder option for controller.

Notes: 1. Other specimen holders available (see price list).
 2. 1mm pitch screws are available as an option.

MOTORIZED FOCUS CONTROL (Z):

Focus Motor: H122
 Focus Sleeve: H968
 Solid Coupler Kit: Please Call

FOCUS MOTOR WITH LINEAR ENCODER PROBE:

Focus Motor: Please Call
 Focus Sleeve: Please Call
 Solid Coupler Kit: Please Call

FILTER WHEEL AND SHUTTERS:

| Application | Adapter | Filter Wheel ^Δ | Shutter (on Filter Wheel) | Shutter (Stand Alone) |
|------------------|---------|---------------------------|---------------------------|-----------------------|
| Excitation, 25mm | HF215 | HF110 | HF200HT | HF202HT |
| Excitation, 35mm | HF215 | HF108 | HF201HT | HF204HT |
| Emission | HF217 | HF110 | N/A | N/A |
| Transmitted | HF218 | N/A | N/A | HF204HT |

^Δ HF110 has ten positions, the HF108 has eight positions.

STAND ALONE CONTROLLER:

H30Z Focus only
 H30XY Stage only
 H30XYZ Stage and focus drive
 Autofocus: Replace "Z" with "A" e.g. H30A
 1 filter wheel, 3 shutters: Add "1" e.g. H30XYZ1
 2 filter wheel, 3 shutters: Add "2" e.g. H30XYZ2
 3 filter wheel, 3 shutters: Add "3" e.g. H30XYZ3
 3 shutter only: Add "5" e.g. H30XYZ5
 Encoder input: Add "E" e.g. H30XYE

Note: H130 Controllers include stage cable and PC RS232 cable.

PCI CARD CONTROLLER: (REQUIRES CUSTOMER SUPPLIED PC)

HP2PC1 PCI control for XY, focus, three filter wheels and analog 0-10V NanoScanZ Piezo control
 HP2ETL PCI slot adapter for encoders and TTL
 HP1ENC Encoder adapter cable

JOYSTICKS:

CS152Z Digipot Control Unit for Z only
 CS152V2 Joystick Control Unit for XY system
 CS152EF Joystick Control Unit for XY and Digipot for Z
 CS152KB Programmable touch screen controller (H130 Only)
 CS100K Manual keypad control for 2 filter wheels and 3 shutters (H130 Only)

LEICA DMIR2 (114MM X 75MM TRAVEL)

MOTORIZED STAGE (XY):

Stage Part Number: H117P2DM
 Specimen Holders: H224R (1x3 slide holder)
 H223XR (well plate holder)
 H229 (variable petri dish holder)
 Limit Switches: Adjustable
 Ball Screws: 2mm pitch

ENCODED STAGE (XY):

Stage Part Number: H117E2DM* (0.1 µm resolution)
 Specimen Holders: H224R (1x3 slide holder)
 H223XR (well plate holder)
 H229 (variable petri dish holder)
 Limit Switches: Adjustable
 Ball Screws: 2mm pitch

*Note: Requires encoder option for controller.

Notes: 1. Other specimen holders available (see price list). Use “R” versions where available.
 2. 1mm pitch screws are available as an option.

MOTORIZED FOCUS CONTROL (Z):

Focus Motor: H122
 Focus Sleeve: H968
 Solid Coupler Kit: H122KLC

FOCUS MOTOR WITH LINEAR ENCODER PROBE:

Focus Motor: H122EK (50 nanometer resolution)
 Focus Sleeve: H968
 Solid Coupler Kit: H122KLC

FILTER WHEEL AND SHUTTERS:

| Application | Adapter | Filter Wheel ^A | Shutter (on Filter Wheel) | Shutter (Stand Alone) |
|------------------|---------|---------------------------|------------------------------|--------------------------|
| Excitation, 25mm | HF215 | HF110 | HF200HT | HF202HT |
| Excitation, 35mm | HF215 | HF108 | HF201HT | HF204HT |
| Emission | HF217 | HF110 | N/A | N/A |
| Transmitted | HF215 | N/A | N/A | HF204HT |

^A HF110 has ten positions, the HF108 has eight positions.

STAND ALONE CONTROLLER:

H30Z Focus only
 H30XY Stage only
 H30XYZ Stage and focus drive
 Autofocus: Replace “Z” with “A” e.g. H30A
 1 filter wheel, 3 shutters: Add “1” e.g. H30XYZ1
 2 filter wheel, 3 shutters: Add “2” e.g. H30XYZ2
 3 filter wheel, 3 shutters: Add “3” e.g. H30XYZ3
 3 shutter only: Add “5” e.g. H30XYZ5
 Encoder input: Add “E” e.g. H30XYE

Note: H130 Controllers include stage cable and PC RS232 cable.

PCI CARD CONTROLLER: (REQUIRES CUSTOMER SUPPLIED PC)

HP2PC1 PCI control for XY, focus, three filter wheels and analog 0-10V NanoScanZ Piezo control
 HP2ETL PCI slot adapter for encoders and TTL
 HP1ENC Encoder adapter cable

JOYSTICKS:

CS152Z Digipot Control Unit for Z only
 CS152V2 Joystick Control Unit for XY system
 CS152EF Joystick Control Unit for XY and digipot for Z
 CS152KB Programmable touch screen controller - H130 only
 CS100K Manual keypad control for 2 filter wheels and 3 shutters - H130 only

LEICA DMLB (114MM X 75MM TRAVEL)

MOTORIZED STAGE (XY):

Stage Part Number: H101ANNN
 Specimen Holders: H224PRV (1x3 slide holder)
 Limit Switches: Adjustable
 Ball Screws: 2mm pitch

ENCODED STAGE (XY):

Stage Part Number: H101ANN1* (0.1 µm resolution)
 Specimen Holders: H224PRV (1x3 slide holder)
 Limit Switches: Adjustable
 Ball Screws: 2mm pitch

*Note: Requires encoder option for controller.

Notes: 1. Other specimen holders available (see price list). Use “PRV” versions when available.
 2. 1mm pitch screws are available as an option.

MOTORIZED FOCUS CONTROL (Z):

Focus Motor: H122LB
 Solid Coupler Kit: H122KLC

FOCUS MOTOR WITH LINEAR ENCODER PROBE:

Focus Motor: H122LBEK* (50 nanometer resolution)
 Solid Coupler Kit: H122KLC

*Note: Requires adapter sleeve and encoder option for controller.

FILTER WHEEL AND SHUTTERS:

| Application | Adapter | Filter Wheel ^A | Shutter (on Filter Wheel) | Shutter (Stand Alone) |
|------------------|---------|---------------------------|------------------------------|--------------------------|
| Excitation, 25mm | HF215 | HF110 | HF200HT | HF202HT |
| Excitation, 35mm | HF215 | HF108 | HF201HT | HF204HT |
| Emission | HF217 | HF110 | N/A | N/A |
| Transmitted | HF215 | N/A | N/A | HF204HT |

^A HF110 has ten positions, the HF108 has eight positions.

STAND ALONE CONTROLLER:

H30Z Focus only
 H30XY Stage only
 H30XYZ Stage and focus drive
 Autofocus: Replace “Z” with “A” e.g. H30A
 1 filter wheel, 3 shutters: Add “1” e.g. H30XYZ1
 2 filter wheel, 3 shutters: Add “2” e.g. H30XYZ2
 3 filter wheel, 3 shutters: Add “3” e.g. H30XYZ3
 3 shutter only: Add “5” e.g. H30XYZ5
 Encoder input: Add “E” e.g. H30XYE

Note: H130 Controllers include stage cable and PC RS232 cable.

PCI CARD CONTROLLER: (REQUIRES CUSTOMER SUPPLIED PC)

HP2PC1 PCI control for XY, focus, three filter wheels and analog 0-10V NanoScanZ Piezo control
 HP2ETL PCI slot adapter for encoders and TTL
 HP1ENC Encoder adapter cable

JOYSTICKS:

CS152Z Digipot Control Unit for Z only
 CS152V2 Joystick Control Unit for XY system
 CS152EF Joystick Control Unit for XY and Digipot for Z
 CS152KB Programmable touch screen controller (H130 Only)
 CS100K Manual keypad control for 2 filter wheels and 3 shutters (H130 Only)

LEICA DMLM (114MM X 75MM TRAVEL)

MOTORIZED STAGE (XY):

Stage Part Number: H101ANNN
 Specimen Holders: H224PRV (1x3 slide holder)
 Limit Switches: Adjustable
 Ball Screws: 2mm pitch

ENCODED STAGE (XY):

Stage Part Number: H101ANN1* (0.1 µm resolution)
 Specimen Holders: H224PRV (1x3 slide holder)
 Limit Switches: Adjustable
 Ball Screws: 2mm pitch

*Note: Requires encoder option for controller.

Notes: 1. Other specimen holders available (see price list). Use “PRV” when available.
 2. 1mm pitch screws are available as an option.

MOTORIZED FOCUS CONTROL (Z):

Focus Motor: H122LB
 Solid Coupler Kit: H122KLC

FOCUS MOTOR WITH LINEAR ENCODER PROBE:

Focus Motor: H122LBE* (50 nanometer resolution)
 Solid Coupler Kit: H122KLC
 *Note: Requires adapter sleeve and encoder option for controller.

FILTER WHEEL AND SHUTTERS:

| Application | Adapter | Filter Wheel ^A | Shutter (on Filter Wheel) | Shutter (Stand Alone) |
|------------------|---------|---------------------------|------------------------------|--------------------------|
| Excitation, 25mm | HF215 | HF110 | HF200HT | HF202HT |
| Excitation, 35mm | HF215 | HF108 | HF201HT | HF204HT |
| Emission | HF217 | HF110 | N/A | N/A |
| Transmitted | HF215 | N/A | N/A | HF204HT |

^A HF110 has ten positions, the HF108 has eight positions.

STAND ALONE CONTROLLER:

H30Z Focus only
 H30XY Stage only
 H30XYZ Stage and focus drive
 Autofocus: Replace “Z” with “A” e.g. H30A
 1 filter wheel, 3 shutters: Add “1” e.g. H30XYZ1
 2 filter wheel, 3 shutters: Add “2” e.g. H30XYZ2
 3 filter wheel, 3 shutters: Add “3” e.g. H30XYZ3
 3 shutter only: Add “5” e.g. H30XYZ5
 Encoder input: Add “E” e.g. H30XYE

Note: H130 Controllers include stage cable and PC RS232 cable.

PCI CARD CONTROLLER: (REQUIRES CUSTOMER SUPPLIED PC)

HP2PC1 PCI control for XY, focus, three filter wheels and analog 0-10V NanoScanZ Piezo control
 HP2ETL PCI slot adapter for encoders and TTL
 HP1ENC Encoder adapter cable

JOYSTICKS:

CS152Z Digipot Control Unit for Z only
 CS152V2 Joystick Control Unit for XY system
 CS152EF Joystick Control Unit for XY and Digipot for Z
 CS152KB Programmable touch screen controller (H130 Only)
 CS100K Manual keypad control for 2 filter wheels and 3 shutters (H130 Only)

MOTORIZED STAGE (XY):

Stage Part Number: H101ANNN
 Specimen Holders: H224 (1x3 slide holder)
 Limit Switches: Adjustable
 Ball Screws: 2mm pitch

ENCODED STAGE (XY):

Stage Part Number: H101ANN1* (0.1 µm resolution)
 Specimen Holders: H224 (1x3 slide holder)
 Limit Switches: Adjustable
 Ball Screws: 2mm pitch

*Note: Requires encoder option for controller.

Notes: 1. Other specimen holders available (see price list).
 2. 1mm pitch screws are available as an option.

MOTORIZED FOCUS CONTROL (Z):

Focus Motor: H122
 Focus Sleeve: H968
 Solid Coupler Kit: H122KLC

FOCUS MOTOR WITH LINEAR ENCODER PROBE:

Focus Motor: H122EK* (50 nanometer resolution)
 Focus Sleeve: H968
 Solid Coupler Kit: H122KLC

*Note: Requires adapter sleeve and encoder option for controller.

FILTER WHEEL AND SHUTTERS:

| Application | Adapter | Filter Wheel ^A | Shutter (on Filter Wheel) | Shutter (Stand Alone) |
|------------------|---------|---------------------------|------------------------------|--------------------------|
| Excitation, 25mm | HF215 | HF110 | HF200HT | HF202HT |
| Excitation, 35mm | HF215 | HF108 | HF201HT | HF204HT |
| Emission | HF217 | HF110 | N/A | N/A |
| Transmitted | HF215 | N/A | N/A | HF204HT |

^A HF110 has ten positions, the HF108 has eight positions.

STAND ALONE CONTROLLER:

H30Z Focus only
 H30XY Stage only
 H30XYZ Stage and focus drive
 Autofocus: Replace “Z” with “A” e.g. H30A
 1 filter wheel, 3 shutters: Add “1” e.g. H30XYZ1
 2 filter wheel, 3 shutters: Add “2” e.g. H30XYZ2
 3 filter wheel, 3 shutters: Add “3” e.g. H30XYZ3
 3 shutter only: Add “5” e.g. H30XYZ5
 Encoder input: Add “E” e.g. H30XYE

Note: H130 Controllers include stage cable and PC RS232 cable.

PCI CARD CONTROLLER: (REQUIRES CUSTOMER SUPPLIED PC)

HP2PC1 PCI control for XY, focus, three filter wheels and analog 0-10V NanoScanZ Piezo control
 HP2ETL PCI slot adapter for encoders and TTL
 HP1ENC Encoder adapter cable

JOYSTICKS:

CS152Z Digipot Control Unit for Z only
 CS152V2 Joystick Control Unit for XY system
 CS152EF Joystick Control Unit for XY and Digipot for Z
 CS152KB Programmable touch screen controller (H130 Only)
 CS100K Manual keypad control for 2 filter wheels and 3 shutters (H130 Only)

LEICA INM100 (154MM X 154MM TRAVEL)

MOTORIZED STAGE (XY):

Stage Part Number: H105AFNN (2mm pitch ball screw)
Stage Part Number: H105BFNN (5mm pitch ball screw)
Specimen Holders: H231 (Solid aluminum plate)
Limit Switches: Adjustable

ENCODED STAGE (XY):

Stage Part Number: H105AFN1* (0.1 µm resolution)
Stage Part Number: H105BFN2* (0.5 µm resolution)
Specimen Holders: H231 (Solid aluminum plate)
Limit Switches: Adjustable

*Note: Requires encoder option for controller.

Notes: 1. Other specimen holders available (see price list).
2. 1mm pitch screws are available as an option.

MOTORIZED FOCUS CONTROL (Z):

Focus Motor: H122LB
Solid Coupler Kit: H122KLC

FOCUS MOTOR WITH LINEAR ENCODERS:

Please call Prior Scientific for more information.

FILTER WHEEL AND SHUTTERS:

Please call Prior Scientific for more information.

STAND ALONE CONTROLLER:

H30XY Stage only
1 filter wheel, 3 shutters: Add "1" e.g. H30XY1
2 filter wheel, 3 shutters: Add "2" e.g. H30XY2
3 filter wheel, 3 shutters: Add "3" e.g. H30XY3
3 shutter only: Add "5" e.g. H30XY5
Encoder input: Add "E" e.g. H30XYE

PCI CARD CONTROLLER: (REQUIRES CUSTOMER SUPPLIED PC)

HP2PC1 PCI control for XY, focus, three filter wheels and analog 0-10V NanoScanZ Piezo control
HP2ETL PCI slot adapter for encoders and TTL
HP1ENC Encoder adapter cable

Note: H130 Controllers include stage cable and PC RS232 cable.

JOYSTICKS:

CS152V2 Joystick Control Unit for XY system
CS152KB Programmable touch screen controller
CS100K Manual keypad control for 2 filter wheels and 3 shutters

LEICA INM200/INM300 (256MM X 215 TRAVEL)

MOTORIZED STAGE (XY):

Stage Part Number: H116AFNN (2mm pitch)
Stage Part Number: H116BFNN (5mm pitch)
Specimen Holders: H232 (Solid aluminum plate)
Limit Switches: Fixed

ENCODED STAGE (XY):

Stage Part Number: H116AFN1* (0.1 micron resolution)
Stage Part Number: H116BFN2* (0.5 micron resolution)
Specimen Holders: H232 (Solid aluminum plate)
Limit Switches: Fixed

*Note: Requires encoder option for controller.

Notes: 1. Other specimen holders available (see price list).
2. 1mm pitch screws are available as an option.

MOTORIZED FOCUS CONTROL (Z):

Focus Motor: H122LB

FILTER WHEEL AND SHUTTERS:

Please call Prior Scientific for more information.

STAND ALONE CONTROLLER:

H30Z Focus only
H30XY Stage only
H30XYZ Stage and focus drive
Autofocus: Replace "Z" with "A" e.g. H30A
1 filter wheel, 3 shutters: Add "1" e.g. H30XYZ1
2 filter wheel, 3 shutters: Add "2" e.g. H30XYZ2
3 filter wheel, 3 shutters: Add "3" e.g. H30XYZ3
3 shutter only: Add "5" e.g. H30XYZ5
Encoder input: Add "E" e.g. H30XYE

PCI CARD CONTROLLER: (REQUIRES CUSTOMER SUPPLIED PC)

HP2PC1 PCI control for XY, focus, three filter wheels and analog 0-10V NanoScanZ Piezo control
HP2ETL PCI slot adapter for encoders and TTL
HP1ENC Encoder adapter cable

Note: H130 Controllers include stage cable and PC RS232 cable.

JOYSTICKS:

CS152Z Digipot Control Unit for Z only
CS152V2 Joystick Control Unit for XY system
CS152EF Joystick Control Unit for XY and Digipot for Z
CS152KB Programmable touch screen controller
CS100K Manual keypad control for 2 filter wheels and 3 shutters

LEICA MZ STEREO (114MM X 75MM TRAVEL)

MOTORIZED STAGE (XY):

Stage Part Number: H101ANNN
 Specimen Holders: H224 (1x3 slide holder)
 Limit Switches: Adjustable
 Ball Screws: 2mm pitch

ENCODED STAGE (XY):

Stage Part Number: H101ANN1* (0.1 µm resolution)
 Specimen Holders: H224 (1x3 slide holder)
 Limit Switches: Adjustable
 Ball Screws: 2mm pitch

*Note: Requires encoder option for controller.

- Notes: 1. Requires stage adapter - please call Prior Scientific for more information.
 2. Other specimen holders available (see price list).
 3. 1mm pitch screws are available as an option.

MOTORIZED FOCUS CONTROL (Z):

Focus Motor: H122LMZ
 Focus Sleeve: Included
 Solid Coupler Kit: Included

FOCUS MOTOR WITH LINEAR ENCODER PROBE:

Not available.

FILTER WHEEL AND SHUTTERS:

| Application | Adapter | Filter Wheel ^Δ | Shutter (on Filter Wheel) | Shutter (Stand Alone) |
|------------------|-------------|---------------------------|------------------------------|--------------------------|
| Excitation, 25mm | Please Call | HF110 | HF200HT | HF202HT |
| Excitation, 35mm | Please Call | HF108 | HF201HT | HF204HT |
| Emission | N/A | N/A | N/A | N/A |
| Transmitted | N/A | N/A | N/A | N/A |

^Δ HF110 has ten positions, the HF108 has eight positions.

STAND ALONE CONTROLLER:

H30Z Focus only
 H30XY Stage only
 H30XYZ Stage and focus drive
 1 filter wheel, 3 shutters: Add "1" e.g. H30XYZ1
 2 filter wheel, 3 shutters: Add "2" e.g. H30XYZ2
 3 shutter only: Add "5" e.g. H30XYZ5
 Encoder input: Add "E" e.g. H30XYE

Note: H130 Controllers include stage cable and PC RS232 cable.

PCI CARD CONTROLLER: (REQUIRES CUSTOMER SUPPLIED PC)

HP2PC1 PCI control for XY, focus, three filter wheels and analog 0-10V NanoScanZ Piezo control
 HP2ETL PCI slot adapter for encoders and TTL
 HP1ENC Encoder adapter cable

Note: PCI Controller should only be used for XY only systems. For focus control, use stand alone H129 controller.

JOYSTICKS:

CS152Z Digipot Control Unit for Z only
 CS152V2 Joystick Control Unit for XY system
 CS152EF Joystick Control Unit for XY and Digipot for Z
 CS152KB Programmable touch screen controller (H130 Only)
 CS100K Manual keypad control for 2 filter wheels and 3 shutters (H130 Only)

MITUTOYO FS70 (114MM X 75MM TRAVEL)

MOTORIZED STAGE (XY):

Stage Part Number: Please Call
 Specimen Holders: H224 (1x3 slide holder)
 Limit Switches: Adjustable
 Ball Screws: 2mm pitch

ENCODED STAGE (XY):

Stage Part Number: Please Call
 Specimen Holders: H224 (1x3 slide holder)
 Limit Switches: Adjustable
 Ball Screws: 2mm pitch

Notes: 1. Other specimen holders available (see price list).
 2. 1mm pitch screws are available as an option.

MOTORIZED FOCUS CONTROL (Z):

Focus Motor: H122
 Focus Sleeve: H557
 Direct Coupler: Please Call

FILTER WHEEL AND SHUTTERS:

| Application | Adapter | Filter Wheel ^A | Shutter (on Filter Wheel) | Shutter (Stand Alone) |
|------------------|-------------|---------------------------|------------------------------|--------------------------|
| Excitation, 25mm | Please Call | HF110 | HF200HT | HF202HT |
| Excitation, 35mm | Please Call | HF108 | HF201HT | HF204HT |
| Emission | Please Call | HF110 | N/A | N/A |
| Transmitted | Please Call | N/A | N/A | N/A |

^A HF110 has ten positions, the HF108 has eight positions.

*HF228 adapter places the filter wheel underneath the head of the microscope.

STAND ALONE CONTROLLER:

H30Z Focus only
 H30XY Stage only
 H30XYZ Stage and focus drive
 Autofocus: Replace "Z" with "A" e.g. H30A
 1 filter wheel, 3 shutters: Add "1" e.g. H30XYZ1
 2 filter wheel, 3 shutters: Add "2" e.g. H30XYZ2
 3 filter wheel, 3 shutters: Add "3" e.g. H30XYZ3
 3 shutter only: Add "5" e.g. H30XYZ5
 Encoder input: Add "E" e.g. H30XYE

Note: H130 Controllers include stage cable and PC RS232 cable.

PCI CARD CONTROLLER: (REQUIRES CUSTOMER SUPPLIED PC)

HP2PC1 PCI control for XY, focus, three filter wheels and analog 0-10V NanoScanZ Piezo control
 HP2ETL PCI slot adapter for encoders and TTL
 HP1ENC Encoder adapter cable

JOYSTICKS:

CS152Z Digipot Control Unit for Z only
 CS152V2 Joystick Control Unit for XY system
 CS152EF Joystick Control Unit for XY and Digipot for Z
 CS152KB Programmable touch screen controller
 CS100K Manual keypad control for two filter wheels and three shutters

MITUTOYO FS110 (154MM X 154MM TRAVEL)

MOTORIZED STAGE (XY):

Stage Part Number: H105AFNN (2mm pitch ball screw)
Stage Part Number: H105BFNN (2mm pitch ball screw)
Specimen Holders: H231 (Solid aluminum plate)
Limit Switches: Adjustable

ENCODED STAGE (XY):

Stage Part Number: H105AFN1* (0.1 µm resolution)
Stage Part Number: H105BFN2* (0.5 µm resolution)
Specimen Holders: H231 (Solid aluminum plate)
Limit Switches: Adjustable

Notes: 1. Other specimen holders available (see price list).

MOTORIZED FOCUS CONTROL (Z):

Focus Motor: H122
Focus Sleeve: H557
Direct Coupler: Please Call

FILTER WHEEL AND SHUTTERS:

Please call Prior Scientific for more information.

STAND ALONE CONTROLLER:

H30XY Stage only
1 filter wheel, 3 shutters: Add "1" e.g. H30XYZ1
2 filter wheel, 3 shutters: Add "2" e.g. H30XYZ2
3 filter wheel, 3 shutters: Add "3" e.g. H30XYZ3
3 shutter only: Add "5" e.g. H30XYZ5
Encoder input: Add "E" e.g. H30XYE

Note: H130 Controllers include stage cable and PC RS232 cable.

PCI CARD CONTROLLER: (REQUIRES CUSTOMER SUPPLIED PC)

HP2PC1 PCI control for XY, focus, three filter wheels and analog 0-10V NanoScanZ Piezo control
HP2ETL PCI slot adapter for encoders and TTL
HP1ENC Encoder adapter cable

JOYSTICKS:

CS152V2 Joystick Control Unit for XY system
CS152KB Programmable touch screen controller
CS100K Manual keypad control for two filter wheels and three shutters

MOTORIZED STAGE (XY):

Stage Part Number: H101AN5N (non-rotating mount)
 Specimen Holders: H224 (1x3 slide holder)
 Limit Switches: Adjustable
 Ball Screws: 2mm pitch

Notes: 1. Other specimen holders available (see price list).
 2. 1mm pitch screws are available as an option.

ENCODED STAGE (XY):

Stage Part Number: H101AN51 (non-rotating mount)
 Specimen Holders: H224 (1x3 slide holder)
 Limit Switches: Adjustable
 Ball Screws: 2mm pitch

MOTORIZED FOCUS CONTROL (Z):

Focus Motor: H122
 Focus Sleeve: H2531P
 Direct Coupler: H122KNI

FILTER WHEEL AND SHUTTERS:

| Application | Adapter | Filter Wheel ^A | Shutter (on Filter Wheel) | Shutter (Stand Alone) |
|------------------|---------|---------------------------|------------------------------|--------------------------|
| Excitation, 25mm | HF220 | HF110 | HF200HT | HF202HT |
| Excitation, 35mm | HF220 | HF108 | HF201HT | HF204HT |
| Emission | HF228* | HF110 | N/A | N/A |
| Transmitted | N/A | N/A | N/A | N/A |

^A HF110 has ten positions, the HF108 has eight positions.

*HF228 adapter places the filter wheel underneath the head of the microscope.

STAND ALONE CONTROLLER:

H30Z Focus only
 H30XY Stage only
 H30XYZ Stage and focus drive
 Autofocus: Replace "Z" with "A" e.g. H30A
 1 filter wheel, 3 shutters: Add "1" e.g. H30XYZ1
 2 filter wheel, 3 shutters: Add "2" e.g. H30XYZ2
 3 filter wheel, 3 shutters: Add "3" e.g. H30XYZ3
 3 shutter only: Add "5" e.g. H30XYZ5
 Encoder input: Add "E" e.g. H30XYE

Note: H130 Controllers include stage cable and PC RS232 cable.

PCI CARD CONTROLLER: (REQUIRES CUSTOMER SUPPLIED PC)

HP2PC1 PCI control for XY, focus, three filter wheels and analog 0-10V NanoScanZ Piezo control
 HP2ETL PCI slot adapter for encoders and TTL
 HP1ENC Encoder adapter cable

JOYSTICKS:

CS152Z Digipot Control Unit for Z only
 CS152V2 Joystick Control Unit for XY system
 CS152EF Joystick Control Unit for XY and Digipot for Z
 CS152KB Programmable touch screen controller
 CS100K Manual keypad control for two filter wheels and three shutters

MOTORIZED STAGE (XY):

Stage Part Number: H101AN5N (non-rotating mount)
 Stage Part Number: H101AN8N (rotating mount)
 Specimen Holders: H224 (1x3 slide holder)
 Specimen Holders: H224PRV (1x3 semi-recessed slide holder for use with C-C Achromat swing out condenser)
 Limit Switches: Adjustable
 Ball Screws: 2mm pitch

Notes: 1. Other specimen holders available (see price list).
 2. 1mm pitch screws are available as an option.

MOTORIZED FOCUS CONTROL (Z):

Focus Motor: H122
 Focus Sleeve: H2531P
 Direct Coupler: H122KNI

FILTER WHEEL AND SHUTTERS:

| Application | Adapter | Filter Wheel ^A | Shutter (on Filter Wheel) | Shutter (Stand Alone) |
|------------------|---------|---------------------------|---------------------------|-----------------------|
| Excitation, 25mm | HF220 | HF110 | HF200HT | HF202HT |
| Excitation, 35mm | HF220 | HF108 | HF201HT | HF204HT |
| Emission | HF228* | HF110 | N/A | N/A |
| Transmitted | N/A | N/A | N/A | N/A |

^A HF110 has ten positions, the HF108 has eight positions.

*HF228 adapter places the filter wheel underneath the head of the microscope.

STAND ALONE CONTROLLER:

H30Z Focus only
 H30XY Stage only
 H30XYZ Stage and focus drive
 Autofocus: Replace "Z" with "A" e.g. H30A
 1 filter wheel, 3 shutters: Add "1" e.g. H30XYZ1
 2 filter wheel, 3 shutters: Add "2" e.g. H30XYZ2
 3 filter wheel, 3 shutters: Add "3" e.g. H30XYZ3
 3 shutter only: Add "5" e.g. H30XYZ5
 Encoder input: Add "E" e.g. H30XE

Note: H130 Controllers include stage cable and PC RS232 cable.

JOYSTICKS:

CS152Z Digipot Control Unit for Z only
 CS152V2 Joystick Control Unit for XY system
 CS152EF Joystick Control Unit for XY and Digipot for Z
 CS152KB Programmable touch screen controller
 CS100K Manual keypad control for two filter wheels and three shutters

ENCODED STAGE (XY):

Stage Part Number: H101AN51 (non-rotating mount)
 Stage Part Number: H101AN81 (rotating mount)
 Specimen Holders: H224 (1x3 slide holder)
 Specimen Holders: H224PRV (1x3 semi-recessed slide holder for use with C-C Achromat swing out condenser)
 Limit Switches: Adjustable
 Ball Screws: 2mm pitch

FOCUS MOTOR WITH LINEAR ENCODER PROBE:

Focus Motor: H122EKK80 (50 nanometer resolution)
 Focus Sleeve: H2531P
 Direct Coupler: H122KNI

*Note: Requires adapter sleeve and encoder option for controller.

PCI CARD CONTROLLER: (REQUIRES CUSTOMER SUPPLIED PC)

HP2PC1 PCI control for XY, focus, three filter wheels and analog 0-10V NanoScanZ Piezo control
 HP2ETL PCI slot adapter for encoders and TTL
 HP1ENC Encoder adapter cable

MOTORIZED STAGE (XY):

Stage Part Number: H101AN8N (rotating mount)
 Specimen Holders: H224 (1x3 slide holder)
 Specimen Holders: H224PRV (1x3 semi-recessed slide holder for use with C-C Achromat swing out condenser)
 Limit Switches: Adjustable
 Ball Screws: 2mm pitch

Notes: 1. Other specimen holders available (see price list).
 2. 1mm pitch screws are available as an option.

ENCODED STAGE (XY):

Stage Part Number: H101AN81 (rotating mount)
 Specimen Holders: H224 (1x3 slide holder)
 Specimen Holders: H224PRV (1x3 semi-recessed slide holder for use with C-C Achromat swing out condenser)
 Limit Switches: Adjustable
 Ball Screws: 2mm pitch

MOTORIZED FOCUS CONTROL (Z):

Note: The Nikon 90i microscope has built-in focus control. Prior Scientific does not manufacture a focus control for the model.

FOCUS MOTOR WITH LINEAR ENCODER PROBE:

FILTER WHEEL AND SHUTTERS:

| Application | Adapter | Filter Wheel ^A | Shutter (on Filter Wheel) | Shutter (Stand Alone) |
|------------------|---------|---------------------------|---------------------------|-----------------------|
| Excitation, 25mm | HF220 | HF110 | HF200HT | HF202HT |
| Excitation, 35mm | HF220 | HF108 | HF201HT | HF204HT |
| Emission | HF228* | HF110 | N/A | N/A |
| Transmitted | HF251 | N/A | N/A | HF204HT |

^A HF110 has ten positions, the HF108 has eight positions.

*HF228 adapter places the filter wheel underneath the head of the microscope.

STAND ALONE CONTROLLER:

H30Z Focus only
 H30XY Stage only
 H30XYZ Stage and focus drive
 Autofocus: Replace "Z" with "A" e.g. H30A
 1 filter wheel, 3 shutters: Add "1" e.g. H30XYZ1
 2 filter wheel, 3 shutters: Add "2" e.g. H30XYZ2
 3 filter wheel, 3 shutters: Add "3" e.g. H30XYZ3
 3 shutter only: Add "5" e.g. H30XYZ5
 Encoder input: Add "E" e.g. H30XYE

Note: H130 Controllers include stage cable and PC RS232 cable.

PCI CARD CONTROLLER: (REQUIRES CUSTOMER SUPPLIED PC)

HP2PC1 PCI control for XY, focus, three filter wheels and analog 0-10V NanoScanZ Piezo control
 HP2ETL PCI slot adapter for encoders and TTL
 HP1ENC Encoder adapter cable

JOYSTICKS:

CS152Z Digipot Control Unit for Z only
 CS152V2 Joystick Control Unit for XY system
 CS152EF Joystick Control Unit for XY and Digipot for Z
 CS152KB Programmable touch screen controller
 CS100K Manual keypad control for two filter wheels and three shutters

NIKON AZ100 (114MM X 75MM TRAVEL)

MOTORIZED STAGE (XY):

Stage Part Number: H101AN5N (non-rotating mount)
 Specimen Holders: H224LP (1x3 slide holder)
 Limit Switches: Adjustable
 Ball Screws: 2mm pitch

Notes: 1. Other specimen holders available (see price list).
 2. 1mm pitch screws are available as an option
 3. Please call when using metallurgical stand.

LOWER MOTORIZED FOCUS CONTROL (Z):

Focus Motor: H122
 Focus Sleeve: H2531
 Direct Coupler: H122KNI

ENCODED STAGE (XY):

Stage Part Number: H101AN51 (non-rotating mount)
 Specimen Holders: H224LP (1x3 slide holder)
 Limit Switches: Adjustable
 Ball Screws: 2mm pitch

UPPER MOTORIZED FOCUS CONTROL (Z):

Focus Motor: H122S15
 Focus Sleeve: Included
 Direct Coupler: H122KON
 Limit Switches: LMTAZ

FOCUS MOTOR WITH LINEAR ENCODER PROBE:

Please call for Prior Scientific for more information

FILTER WHEEL AND SHUTTERS:

| Application | Adapter | Filter Wheel ^ø | Shutter (on Filter Wheel) | Shutter (Stand Alone) |
|------------------|-------------|---------------------------|---------------------------|-----------------------|
| Excitation, 25mm | L200PRO2M | L200PRO2M | L200PRO2M | N/A |
| Emission | HF240 | HF110 | N/A | N/A |
| Transmitted | Please Call | N/A | N/A | Please Call |

^øHF110 has ten positions.

*HF228 adapter places the filter wheel underneath the head of the microscope.

**Lumen 200PRO without collimating lens.

STAND ALONE CONTROLLER:

H30Z Focus only
 H30XY Stage only
 H30XYZ Stage and focus drive
 Autofocus: Replace "Z" with "A" e.g. H30A
 1 filter wheel, 3 shutters: Add "1" e.g. H30XYZ1
 2 filter wheel, 3 shutters: Add "2" e.g. H30XYZ2
 3 filter wheel, 3 shutters: Add "3" e.g. H30XYZ3
 3 shutter only: Add "5" e.g. H30XYZ5
 Encoder input: Add "E" e.g. H30XYE

Note: H130 Controllers include stage cable and PC RS232 cable.

PCI CARD CONTROLLER: (REQUIRES CUSTOMER SUPPLIED PC)

HP2PC1 PCI control for XY, focus, three filter wheels and analog 0-10V NanoScanZ Piezo control
 HP2ETL PCI slot adapter for encoders and TTL
 HP1ENC Encoder adapter cable

JOYSTICKS:

CS152Z Digipot Control Unit for Z only
 CS152V2 Joystick Control Unit for XY system
 CS152EF Joystick Control Unit for XY and Digipot for Z
 CS152KB Programmable touch screen controller
 CS100K Manual keypad control for two filter wheels and three shutters

NIKON DIAPHOT 300 (112MM X 70MM TRAVEL)

MOTORIZED STAGE (XY):

Stage Part Number: H107ACNN
 Specimen Holders: H224R (1x3 slide holder)
 H223R (well plate holder)
 H229 (variable petri dish holder)
 Limit Switches: Adjustable
 Ball Screws: 2mm pitch

ENCODED STAGE (XY):

Stage Part Number: H107ACN1* (0.1 µm resolution)
 Specimen Holders: H224R (1x3 slide holder)
 H223R (well plate holder)
 H229 (variable petri dish holder)
 Limit Switches: Adjustable
 Ball Screws: 2mm pitch

*Note: Requires encoder option for controller.

Notes: 1. Other specimen holders available (see price list). Use “R” versions where available.
 2. 1mm pitch screws are available as an option.

MOTORIZED FOCUS CONTROL (Z):

Focus Motor: H122
 Focus Sleeve: H556
 Solid Coupler Kit: H122KON

FILTER WHEEL AND SHUTTERS:

| Application | Adapter | Filter Wheel [^] | Shutter (on Filter Wheel) | Shutter (Stand Alone) |
|------------------|---------|---------------------------|------------------------------|--------------------------|
| Excitation, 25mm | HF220 | HF110 | HF200HT | HF202HT |
| Excitation, 35mm | HF220 | HF108 | HF201HT | HF204HT |
| Emission | HF223 | HF110 | N/A | N/A |
| Transmitted | N/A | N/A | N/A | N/A |

[^] HF110 has ten positions, the HF108 has eight positions.

STAND ALONE CONTROLLER:

H30Z Focus only
 H30XY Stage only
 H30XYZ Stage and focus drive
 Autofocus: Replace “Z” with “A” e.g. H30A
 1 filter wheel, 3 shutters: Add “1” e.g. H30XYZ1
 2 filter wheel, 3 shutters: Add “2” e.g. H30XYZ2
 3 filter wheel, 3 shutters: Add “3” e.g. H30XYZ3
 3 shutter only: Add “5” e.g. H30XYZ5
 Encoder input: Add “E” e.g. H30XE

Note: H130 Controllers include stage cable and PC RS232 cable.

PCI CARD CONTROLLER: (REQUIRES CUSTOMER SUPPLIED PC)

HP2PC1 PCI control for XY, focus, three filter wheels and analog 0-10V NanoScanZ Piezo control
 HP2ETL PCI slot adapter for encoders and TTL
 HP1ENC Encoder adapter cable

JOYSTICKS:

CS152Z Digipot Control Unit for Z only
 CS152V2 Joystick Control Unit for XY system
 CS152EF Joystick Control Unit for XY and Digipot for Z
 CS152KB Programmable touch screen controller
 CS100K Manual keypad control for 2 filter wheels and 3 shutters

NIKON DIAPHOT TMD/EPIPHOT TMD (112MM X 70MM TRAVEL)

MOTORIZED STAGE (XY):

Stage Part Number: H107APNN
 Specimen Holders: H224R (1x3 slide holder)
 H223R (well plate holder)
 H229 (variable petri dish holder)
 Limit Switches: Adjustable
 Ball Screws: 2mm pitch

Notes: 1. Other specimen holders available (see price list). Use “R” versions where available.
 2. 1mm pitch screws are available as an option.

MOTORIZED FOCUS CONTROL (Z):

Focus Motor: H122
 Focus Sleeve: H553
 Solid Coupler Kit: H122KON

FILTER WHEEL AND SHUTTERS:

| Application | Adapter | Filter Wheel ^A | Shutter (on Filter Wheel) | Shutter (Stand Alone) |
|------------------|---------|---------------------------|------------------------------|--------------------------|
| Excitation, 25mm | HF220 | HF110 | HF200HT | HF202HT |
| Excitation, 35mm | HF220 | HF108 | HF201HT | HF204HT |
| Emission | N/A | N/A | N/A | N/A |
| Transmitted | N/A | N/A | N/A | N/A |

^A HF110 has ten positions, the HF108 has eight positions.

STAND ALONE CONTROLLER:

H30Z Focus only
 H30XY Stage only
 H30XYZ Stage and focus drive
 Autofocus: Replace “Z” with “A” e.g. H30A
 1 filter wheel, 3 shutters: Add “1” e.g. H30XYZ1
 2 filter wheel, 3 shutters: Add “2” e.g. H30XYZ2
 3 filter wheel, 3 shutters: Add “3” e.g. H30XYZ3
 3 shutter only: Add “5” e.g. H30XYZ5
 Encoder input: Add “E” e.g. H30XYE

Note: H130 Controllers include stage cable and PC RS232 cable.

PCI CARD CONTROLLER: (REQUIRES CUSTOMER SUPPLIED PC)

HP2PC1 PCI control for XY, focus, three filter wheels and analog 0-10V NanoScanZ Piezo control
 HP2ETL PCI slot adapter for encoders and TTL
 HP1ENC Encoder adapter cable

JOYSTICKS:

CS152Z Digipot Control Unit for Z only
 CS152V2 Joystick Control Unit for XY system
 CS152EF Joystick Control Unit for XY and Digipot for Z
 CS152KB Programmable touch screen controller
 CS100K Manual keypad control for 2 filter wheels and 3 shutters

MOTORIZED STAGE (XY):

Stage Part Number: H101ANNN
 Specimen Holders: H224 (1x3 slide holder)
 Limit Switches: Adjustable
 Ball Screws: 2mm pitch

ENCODED STAGE (XY):

Stage Part Number: H101ANN1* (0.1 µm resolution)
 Specimen Holders: H224 (1x3 slide holder)
 Limit Switches: Adjustable
 Ball Screws: 2mm pitch

*Note: Requires encoder option for controller.

Notes: 1. Other specimen holders available (see price list).
 2. 1mm pitch screws are available as an option.

MOTORIZED FOCUS CONTROL (Z):

Focus Motor: H122
 Focus Sleeve: H556
 Solid Coupler Kit: H122KON

FOCUS MOTOR WITH LINEAR ENCODER PROBE:

Focus Motor: H122EK* (50 nanometer resolution)
 Focus Sleeve: H556
 Solid Coupler Kit: H122KON

FILTER WHEEL AND SHUTTERS:

| Application | Adapter | Filter Wheel ^A | Shutter (on Filter Wheel) | Shutter (Stand Alone) |
|------------------|-------------|---------------------------|---------------------------|-----------------------|
| Excitation, 25mm | HF220 | HF110 | HF200HT | HF202HT |
| Excitation, 35mm | HF220 | HF108 | HF201HT | HF204HT |
| Emission | HF228* | HF110 | N/A | N/A |
| Transmitted | Please Call | N/A | N/A | HF204HT |

*HF228 adapter places the filter wheel underneath the head of the microscope.

^A HF110 has ten positions, the HF108 has eight positions.

STAND ALONE CONTROLLER:

H30Z Focus only
 H30XY Stage only
 H30XYZ Stage and focus drive
 Autofocus: Replace "Z" with "A" e.g. H30A
 1 filter wheel, 3 shutters: Add "1" e.g. H30XYZ1
 2 filter wheel, 3 shutters: Add "2" e.g. H30XYZ2
 3 filter wheel, 3 shutters: Add "3" e.g. H30XYZ3
 3 shutter only: Add "5" e.g. H30XYZ5
 Encoder input: Add "E" e.g. H30XYE

Note: H130 Controllers include stage cable and PC RS232 cable.

PCI CARD CONTROLLER: (REQUIRES CUSTOMER SUPPLIED PC)

HP2PC1 PCI control for XY, focus, three filter wheels and analog 0-10V NanoScanZ Piezo control
 HP2ETL PCI slot adapter for encoders and TTL
 HP1ENC Encoder adapter cable

JOYSTICKS:

CS152Z Digipot Control Unit for Z only
 CS152V2 Joystick Control Unit for XY system
 CS152EF Joystick Control Unit for XY and Digipot for Z
 CS152KB Programmable touch screen controller
 CS100K Manual keypad control for 2 filter wheels and 3 shutters

MOTORIZED STAGE (XY):

Stage Part Number: H101ANNN
 Specimen Holders: H224PRV (1x3 slide holder)
 Limit Switches: Adjustable
 Ball Screws: 2mm pitch

ENCODED STAGE (XY):

Stage Part Number: H101ANN1* (0.1 µm resolution)
 Specimen Holders: H224PRV (1x3 slide holder)
 Limit Switches: Adjustable
 Ball Screws: 2mm pitch

*Note: Requires encoder option for controller.

Notes: 1. Other specimen holders available (see price list).
 2. 1mm pitch screws are available as an option.

MOTORIZED FOCUS CONTROL (Z):

Focus Motor: H122
 Focus Sleeve: H556
 Solid Coupler Kit: H122KON

FOCUS MOTOR WITH LINEAR ENCODER PROBE:

Focus Motor: H122EK (50 nanometer resolution)
 Focus Sleeve: H556
 Solid Coupler Kit: H122KON

FILTER WHEEL AND SHUTTERS:

| Application | Adapter | Filter Wheel ^A | Shutter (on Filter Wheel) | Shutter (Stand Alone) |
|------------------|---------|---------------------------|---------------------------|-----------------------|
| Excitation, 25mm | HF220 | HF110 | HF200HT | HF202HT |
| Excitation, 35mm | HF220 | HF108 | HF201HT | HF204HT |
| Emission | HF228* | HF110 | N/A | N/A |
| Transmitted | HF226 | N/A | N/A | HF204HT |

* HF228 adapter places the filter wheel underneath the head of the microscope.

^A HF110 has ten positions, the HF108 has eight positions.

STAND ALONE CONTROLLER:

H30Z Focus only
 H30XY Stage only
 H30XYZ Stage and focus drive
 Autofocus: Replace "Z" with "A" e.g. H30A
 1 filter wheel, 3 shutters: Add "1" e.g. H30XYZ1
 2 filter wheel, 3 shutters: Add "2" e.g. H30XYZ2
 3 filter wheel, 3 shutters: Add "3" e.g. H30XYZ3
 3 shutter only: Add "5" e.g. H30XYZ5
 Encoder input: Add "E" e.g. H30XE

Note: H130 Controllers include stage cable and PC RS232 cable.

PCI CARD CONTROLLER: (REQUIRES CUSTOMER SUPPLIED PC)

HP2PC1 PCI control for XY, focus, three filter wheels and analog 0-10V NanoScanZ Piezo control
 HP2ETL PCI slot adapter for encoders and TTL
 HP1ENC Encoder adapter cable

JOYSTICKS:

CS152Z Digipot Control Unit for Z only
 CS152V2 Joystick Control Unit for XY system
 CS152EF Joystick Control Unit for XY and Digipot for Z
 CS152KB Programmable touch screen controller
 CS100K Manual keypad control for 2 filter wheels and 3 shutters

MOTORIZED STAGE (XY):

Stage Part Number: H101ANNN
 Specimen Holders: H224PRV (1x3 slide holder)
 Limit Switches: Adjustable
 Ball Screws: 2mm pitch

ENCODED STAGE (XY):

Stage Part Number: H101ANN1* (0.1 µm resolution)
 Specimen Holders: H224PRV (1x3 slide holder)
 Limit Switches: Adjustable
 Ball Screws: 2mm pitch

*Note: Requires encoder option for controller.

- Notes: 1. Other specimen holders available (see price list).
 2. 1mm pitch screws are available as an option.

MOTORIZED FOCUS CONTROL (Z):

Focus Motor: H122
 Focus Sleeve: H556
 Solid Coupler Kit: H122KON

FOCUS MOTOR WITH LINEAR ENCODER PROBE:

Not available.

FILTER WHEEL AND SHUTTERS:

| Application | Adapter | Filter Wheel ^A | Shutter (on Filter Wheel) | Shutter (Stand Alone) |
|------------------|---------|---------------------------|---------------------------|-----------------------|
| Excitation, 25mm | HF220 | HF110 | HF200HT | HF202HT |
| Excitation, 35mm | HF220 | HF108 | HF201HT | HF204HT |
| Emission | HF228* | HF110 | N/A | N/A |
| Transmitted | HF226 | N/A | N/A | HF204HT |

* HF228 adapter places the filter wheel underneath the head of the microscope.

^A HF110 has ten positions, the HF108 has eight positions.

STAND ALONE CONTROLLER:

H30Z Focus only
 H30XY Stage only
 H30XYZ Stage and focus drive
 Autofocus: Replace "Z" with "A" e.g. H30A
 1 filter wheel, 3 shutters: Add "1" e.g. H30XYZ1
 2 filter wheel, 3 shutters: Add "2" e.g. H30XYZ2
 3 filter wheel, 3 shutters: Add "3" e.g. H30XYZ3
 3 shutter only: Add "5" e.g. H30XYZ5
 Encoder input: Add "E" e.g. H30XYE

Note: H130 Controllers include stage cable and PC RS232 cable.

PCI CARD CONTROLLER: (REQUIRES CUSTOMER SUPPLIED PC)

HP2PC1 PCI control for XY, focus, three filter wheels and analog 0-10V NanoScanZ Piezo control
 HP2ETL PCI slot adapter for encoders and TTL
 HP1ENC Encoder adapter cable

JOYSTICKS:

CS152Z Digipot Control Unit for Z only
 CS152V2 Joystick Control Unit for XY system
 CS152EF Joystick Control Unit for XY and Digipot for Z
 CS152KB Programmable touch screen controller
 CS100K Manual keypad control for 2 filter wheels and 3 shutters

MOTORIZED STAGE (XY):

Stage Part Number: H101ANNN
 Specimen Holders: H224 (1x3 slide holder)
 Limit Switches: Adjustable
 Ball Screws: 2mm pitch

ENCODED STAGE (XY):

Stage Part Number: H101ANN1* (0.1 µm resolution)
 Specimen Holders: H224 (1x3 slide holder)
 Limit Switches: Adjustable
 Ball Screws: 2mm pitch

*Note: Requires encoder option for controller.

Notes: 1. Other specimen holders available (see price list).
 2. 1mm pitch screws are available as an option.

MOTORIZED FOCUS CONTROL (Z):

Focus Motor: H122
 Focus Sleeve: H556
 Solid Coupler Kit: H122KNE8

FOCUS MOTOR WITH LINEAR ENCODER PROBE:

Focus Motor: H122EK* (50 nanometer resolution)
 Focus Sleeve: H556
 Solid Coupler Kit: H122KNE8

FILTER WHEEL AND SHUTTERS:

| Application | Adapter | Filter Wheel ^Δ | Shutter (on Filter Wheel) | Shutter (Stand Alone) |
|------------------|------------|---------------------------|------------------------------|--------------------------|
| Excitation, 25mm | HF220 | HF110 | HF200HT | HF202HT |
| Excitation, 35mm | HF220 | HF108 | HF201HT | HF204HT |
| Emission | 500-HF228* | HF110 | N/A | N/A |
| Transmitted | 500-HF226 | N/A | N/A | HF204HT |

*HF228 adapter places the filter wheel underneath the head of the microscope.

^Δ HF110 has ten positions, the HF108 has eight positions.

STAND ALONE CONTROLLER:

H30Z Focus only
 H30XY Stage only
 H30XYZ Stage and focus drive
 Autofocus: Replace "Z" with "A" e.g. H30A
 1 filter wheel, 3 shutters: Add "1" e.g. H30XYZ1
 2 filter wheel, 3 shutters: Add "2" e.g. H30XYZ2
 3 filter wheel, 3 shutters: Add "3" e.g. H30XYZ3
 3 shutter only: Add "5" e.g. H30XYZ5
 Encoder input: Add "E" e.g. H30XYE

Note: H130 Controllers include stage cable and PC RS232 cable.

PCI CARD CONTROLLER: (REQUIRES CUSTOMER SUPPLIED PC)

HP2PC1 PCI control for XY, focus, three filter wheels and analog 0-10V NanoScanZ Piezo control
 HP2ETL PCI slot adapter for encoders and TTL
 HP1ENC Encoder adapter cable

JOYSTICKS:

CS152Z Digipot Control Unit for Z only
 CS152V2 Joystick Control Unit for XY system
 CS152EF Joystick Control Unit for XY and Digipot for Z
 CS152KB Programmable touch screen controller (H130 Only)
 CS100K Manual keypad control for 2 filter wheels and 3 shutters (H130 Only)

MOTORIZED STAGE (XY):

Stage Part Number: H101NIM
 Specimen Holders: Single slide holder included with stage
 Limit Switches: Adjustable
 Ball Screws: 2mm pitch

Notes:

- 1mm pitch screws are available as an option.

MOTORIZED FOCUS CONTROL (Z):

Focus Motor: H122
 Focus Sleeve: H556
 Solid Coupler Kit: H122KNE8

FOCUS MOTOR WITH LINEAR ENCODER PROBE:

Focus Motor: H122EK* (50 nanometer resolution)
 Focus Sleeve: H556
 Solid Coupler Kit: H122KNE8

*Note: Requires adapter sleeve and encoder option for controller.

FILTER WHEEL AND SHUTTERS:

| Application | Adapter | Filter Wheel ^A | Shutter (on Filter Wheel) | Shutter (Stand Alone) |
|------------------|---------|---------------------------|---------------------------|-----------------------|
| Excitation, 25mm | HF220 | HF110 | HF200HT | HF202HT |
| Excitation, 35mm | HF220 | HF108 | HF201HT | HF204HT |
| Emission | HF228* | HF110 | N/A | N/A |
| Transmitted | HF226 | N/A | N/A | HF204HT |

*HF228 adapter places the filter wheel underneath the head of the microscope.

^A HF110 has ten positions, the HF108 has eight positions.

STAND ALONE CONTROLLER:

H30Z Focus only
 H30XY Stage only
 H30XYZ Stage and focus drive
 Autofocus: Replace "Z" with "A" e.g. H30A
 1 filter wheel, 3 shutters: Add "1" e.g. H30XYZ1
 2 filter wheel, 3 shutters: Add "2" e.g. H30XYZ2
 3 filter wheel, 3 shutters: Add "3" e.g. H30XYZ3
 3 shutter only: Add "5" e.g. H30XYZ5
 Encoder input: Add "E" e.g. H30XYE

Note: H130 Controllers include stage cable and PC RS232 cable.

PCI CARD CONTROLLER: (REQUIRES CUSTOMER SUPPLIED PC)

HP2PC1 PCI control for XY, focus, three filter wheels and analog 0-10V NanoScanZ Piezo control
 HP2ETL PCI slot adapter for encoders and TTL
 HP1ENC Encoder adapter cable

JOYSTICKS:

CS152Z Digipot Control Unit for Z only
 CS152V2 Joystick Control Unit for XY system
 CS152EF Joystick Control Unit for XY and Digipot for Z
 CS152KB Programmable touch screen controller
 CS100K Manual keypad control for 2 filter wheels and 3 shutters

MOTORIZED STAGE (XY):

Stage Part Number: H101ANNN
 Specimen Holders: H224 (1x3 slide holder)
 Limit Switches: Adjustable
 Ball Screws: 2mm pitch

ENCODED STAGE (XY):

Stage Part Number: H101ANN1* (0.1 µm resolution)
 Specimen Holders: H224 (1x3 slide holder)
 Limit Switches: Adjustable
 Ball Screws: 2mm pitch

*Note: Requires encoder option for controller.

Notes: 1. Other specimen holders available (see price list).
 2. 1mm pitch screws are available as an option.

MOTORIZED FOCUS CONTROL (Z):

Microscope has built-in focus control. Prior focus control is not available on this microscope.

FILTER WHEEL AND SHUTTERS:

| Application | Adapter | Filter Wheel [^] | Shutter (on Filter Wheel) | Shutter (Stand Alone) |
|------------------|---------|---------------------------|------------------------------|--------------------------|
| Excitation, 25mm | HF220 | HF110 | HF200HT | HF202HT |
| Excitation, 35mm | HF220 | HF108 | HF201HT | HF204HT |
| Emission | HF228* | HF110 | N/A | N/A |
| Transmitted | HF226 | N/A | N/A | HF204HT |

*HF228 adapter places the filter wheel underneath the head of the microscope.

[^] HF110 has ten positions, the HF108 has eight positions.

STAND ALONE CONTROLLER:

H30XY Stage only
 1 filter wheel, 3 shutters: Add "1" e.g. H30XY1
 2 filter wheel, 3 shutters: Add "2" e.g. H30XY2
 3 filter wheel, 3 shutters: Add "3" e.g. H30XY3
 3 shutter only: Add "5" e.g. H30XY5
 Encoder input: Add "E" e.g. H30XYE

PCI CARD CONTROLLER: (REQUIRES CUSTOMER SUPPLIED PC)

HP2PC1 PCI control for XY, focus, three filter wheels and analog 0-10V NanoScanZ Piezo control
 HP2ETL PCI slot adapter for encoders and TTL
 HP1ENC Encoder adapter cable

Note: H130 Controllers include stage cable and PC RS232 cable.

JOYSTICKS:

CS152V2 Joystick Control Unit for XY system
 CS152KB Programmable touch screen controller (H130 Only)
 CS100K Manual keypad control for 2 filter wheels and 3 shutters (H130 Only)

NIKON E1000M (70MM X 50MM TRAVEL)

MOTORIZED STAGE (XY):

Stage Part Number: H101NIM
Specimen Holders: Single slide holder included with stage
Limit Switches: Adjustable
Ball Screws: 2mm pitch

Notes:

1. 1mm pitch screws are available as an option.

MOTORIZED FOCUS CONTROL (Z):

Microscope has built-in focus control. Prior focus control is not available on this microscope.

FILTER WHEEL AND SHUTTERS:

| Application | Adapter | Filter Wheel [^] | Shutter (on Filter Wheel) | Shutter (Stand Alone) |
|------------------|---------|---------------------------|------------------------------|--------------------------|
| Excitation, 25mm | HF220 | HF110 | HF200HT | HF202HT |
| Excitation, 35mm | HF220 | HF108 | HF201HT | HF204HT |
| Emission | HF228* | HF110 | N/A | N/A |
| Transmitted | HF226 | N/A | N/A | HF204HT |

*HF228 adapter places the filter wheel underneath the head of the microscope.

[^] HF110 has ten positions, the HF108 has eight positions.

STAND ALONE CONTROLLER:

H30XY Stage only
1 filter wheel, 3 shutters: Add "1" e.g. H30XY1
2 filter wheel, 3 shutters: Add "2" e.g. H30XY2
3 filter wheel, 3 shutters: Add "3" e.g. H30XY3
3 shutter only: Add "5" e.g. H30XY5
Encoder input: Add "E" e.g. H30XYE

Note: H130 Controllers include stage cable and PC RS232 cable.

JOYSTICKS:

CS152V2 Joystick Control Unit for XY system
CS152KB Programmable touch screen controller
CS100K Manual keypad control for 2 filter wheels and 3 shutters

PCI CARD CONTROLLER: (REQUIRES CUSTOMER SUPPLIED PC)

HP2PC1 PCI control for XY, focus, three filter wheels and analog 0-10V NanoScanZ Piezo control
HP2ETL PCI slot adapter for encoders and TTL
HP1ENC Encoder adapter cable

NIKON FN1 (114MM X 75MM TRAVEL)

MOTORIZED STAGE (XY):

Stage Part Number: H101FN1
 Specimen Holders: H224 (1x3 slide holder)
 Limit Switches: Adjustable
 Ball Screws: 2mm pitch

ENCODED STAGE (XY):

Stage Part Number: Please Call
 Specimen Holders: H224 (1x3 slide holder)
 Limit Switches: Adjustable
 Ball Screws: 2mm pitch

Notes: 1. Other specimen holders available (see price list).
 2. 1mm pitch screws are available as an option.

MOTORIZED FOCUS CONTROL (Z):

Focus Motor: H122
 Focus Sleeve: H2531P
 Direct Coupler: H122KNI

FILTER WHEEL AND SHUTTERS:

| Application | Adapter | Filter Wheel ^A | Shutter (on Filter Wheel) | Shutter (Stand Alone) |
|------------------|---------|---------------------------|------------------------------|--------------------------|
| Excitation, 25mm | HF220 | HF110 | HF200HT | HF202HT |
| Excitation, 35mm | HF220 | HF108 | HF201HT | HF204HT |
| Emission | HF228* | HF110 | N/A | N/A |
| Transmitted | N/A | N/A | N/A | N/A |

^A HF110 has ten positions, the HF108 has eight positions.

*HF228 adapter places the filter wheel underneath the head of the microscope.

STAND ALONE CONTROLLER:

H30Z Focus only
 H30XY Stage only
 H30XYZ Stage and focus drive
 Autofocus: Replace "Z" with "A" e.g. H30A
 1 filter wheel, 3 shutters: Add "1" e.g. H30XYZ1
 2 filter wheel, 3 shutters: Add "2" e.g. H30XYZ2
 3 filter wheel, 3 shutters: Add "3" e.g. H30XYZ3
 3 shutter only: Add "5" e.g. H30XYZ5
 Encoder input: Add "E" e.g. H30XYE

Note: H130 Controllers include stage cable and PC RS232 cable.

PCI CARD CONTROLLER: (REQUIRES CUSTOMER SUPPLIED PC)

HP2PC1 PCI control for XY, focus, three filter wheels and analog 0-10V NanoScanZ Piezo control
 HP2ETL PCI slot adapter for encoders and TTL
 HP1ENC Encoder adapter cable

JOYSTICKS:

CS152Z Digipot Control Unit for Z only
 CS152V2 Joystick Control Unit for XY system
 CS152EF Joystick Control Unit for XY and Digipot for Z
 CS152KB Programmable touch screen controller
 CS100K Manual keypad control for two filter wheels and three shutters

MOTORIZED STAGE (XY):

Stage Part Number: H105ANNN (2mm pitch)
 Stage Part Number: H105BNNN (5mm pitch)
 Specimen Holders: H2117 (Solid aluminum plate)
 Limit Switches: Adjustable

ENCODED STAGE (XY):

Stage Part Number: H105ANN1* (0.1 micron resolution)
 Stage Part Number: H105BNN2* (0.5 micron resolution)
 Specimen Holders: H2117 (Solid aluminum plate)
 Limit Switches: Adjustable

*Note: Requires encoder option for controller.

Notes: 1. Other specimen holders available (see price list).
 2. 1mm pitch screws are available as an option.

MOTORIZED FOCUS CONTROL (Z):

Focus Motor: H122
 Focus Sleeve: H556
 Solid Coupler Kit: H122KON

FILTER WHEEL AND SHUTTERS:

Please call Prior Scientific for more information.

STAND ALONE CONTROLLER:

H30Z Focus only
 H30XY Stage only
 H30XYZ Stage and focus drive
 Autofocus: Replace "Z" with "A" e.g. H30A
 1 filter wheel, 3 shutters: Add "1" e.g. H30XYZ1
 2 filter wheel, 3 shutters: Add "2" e.g. H30XYZ2
 3 filter wheel, 3 shutters: Add "3" e.g. H30XYZ3
 3 shutter only: Add "5" e.g. H30XYZ5
 Encoder input: Add "E" e.g. H30XYE

Note: H130 Controllers include stage cable and PC RS232 cable.

PCI CARD CONTROLLER: (REQUIRES CUSTOMER SUPPLIED PC)

HP2PC1 PCI control for XY, focus, three filter wheels and analog 0-10V NanoScanZ Piezo control
 HP2ETL PCI slot adapter for encoders and TTL
 HP1ENC Encoder adapter cable

JOYSTICKS:

CS152Z Digipot Control Unit for Z only
 CS152V2 Joystick Control Unit for XY system
 CS152EF Joystick Control Unit for XY and Digipot for Z
 CS152KB Programmable touch screen controller
 CS100K Manual keypad control for 2 filter wheels and 3 shutters

NIKON L200/LV200 (256MM X 215MM TRAVEL)

MOTORIZED STAGE (XY):

Stage Part Number: H116ARNN (2mm pitch)
Stage Part Number: H116BRNN (5mm pitch)
Specimen Holders: H232 (Solid aluminum plate)
Limit Switches: Fixed

ENCODED STAGE (XY):

Stage Part Number: H116ARN1* (0.1 micron resolution)
Stage Part Number: H116BRN2* (0.5 micron resolution)
Specimen Holders: H232 (Solid aluminum plate)
Limit Switches: Fixed

*Note: Requires encoder option for controller.

Notes: 1. Other specimen holders available (see price list).
2. 1mm pitch screws are available as an option.

MOTORIZED FOCUS CONTROL (Z):

Focus Motor: H122
Focus Sleeve: H556
Solid Coupler Kit: H122KON

FILTER WHEEL AND SHUTTERS:

Please call Prior Scientific for more information.

STAND ALONE CONTROLLER:

H30Z Focus only
H30XY Stage only
H30XYZ Stage and focus drive
Autofocus: Replace "Z" with "A" e.g. H30A
1 filter wheel, 3 shutters: Add "1" e.g. H30XYZ1
2 filter wheel, 3 shutters: Add "2" e.g. H30XYZ2
3 filter wheel, 3 shutters: Add "3" e.g. H30XYZ3
3 shutter only: Add "5" e.g. H30XYZ5
Encoder input: Add "E" e.g. H30XYE

Note: H130 Controllers include stage cable and PC RS232 cable.

PCI CARD CONTROLLER: (REQUIRES CUSTOMER SUPPLIED PC)

HP2PC1 PCI control for XY, focus, three filter wheels and analog 0-10V NanoScanZ Piezo control
HP2ETL PCI slot adapter for encoders and TTL
HP1ENC Encoder adapter cable

JOYSTICKS:

CS152Z Digipot Control Unit for Z only
CS152V2 Joystick Control Unit for XY system
CS152EF Joystick Control Unit for XY and Digipot for Z
CS152KB Programmable touch screen controller
CS100K Manual keypad control for 2 filter wheels and 3 shutters

MOTORIZED STAGE (XY):

Stage Part Number: H105ANNN (154mm x 154mm)
 Specimen Holders: H2117 (Solid aluminum plate)

Stage Part Number: H101ANNN (114mm x 75mm)
 Specimen Holders: H230 (Solid aluminum plate)

ENCODED STAGE (XY):

Stage Part Number: H105ANN1* (154mm x 154mm)
 Specimen Holders: H2117 (Solid aluminum plate)

Stage Part Number: H101ANN1* (114mm x 75mm)
 Specimen Holders: H230 (Solid aluminum plate)

*Note: Requires encoder option for controller. Linear scales are 0.1 micron resolution.

- Notes: 1. Other specimen holders available (see price list).
 2. 1mm pitch screws are available as an option.
 3. Adjustable limit switches

MOTORIZED FOCUS CONTROL (Z):

Focus Motor: H122
 Focus Sleeve: H556
 Solid Coupler Kit: Please call

FILTER WHEEL AND SHUTTERS:

Please call Prior Scientific for more information.

STAND ALONE CONTROLLER:

H30Z Focus only
 H30XY Stage only
 H30XYZ Stage and focus drive
 Autofocus: Replace "Z" with "A" e.g. H30A
 1 filter wheel, 3 shutters: Add "1" e.g. H30XYZ1
 2 filter wheel, 3 shutters: Add "2" e.g. H30XYZ2
 3 filter wheel, 3 shutters: Add "3" e.g. H30XYZ3
 3 shutter only: Add "5" e.g. H30XYZ5
 Encoder input: Add "E" e.g. H30XYE

PCI CARD CONTROLLER: (REQUIRES CUSTOMER SUPPLIED PC)

HP2PC1 PCI control for XY, focus, three filter wheels and analog 0-10V NanoScanZ Piezo control
 HP2ETL PCI slot adapter for encoders and TTL
 HP1ENC Encoder adapter cable

Note: H130 Controllers include stage cable and PC RS232 cable.

JOYSTICKS:

CS152Z Digipot Control Unit for Z only
 CS152V2 Joystick Control Unit for XY system
 CS152EF Joystick Control Unit for XY and Digipot for Z
 CS152KB Programmable touch screen controller
 CS100K Manual keypad control for 2 filter wheels and 3 shutters

MOTORIZED STAGE (XY):

Stage Part Number: H105ANNN (154mm x 154mm)
 Specimen Holders: H2117 (Solid aluminum plate)

Stage Part Number: H101ANNN (114mm x 75mm)
 Specimen Holders: H230 (Solid aluminum plate)

ENCODED STAGE (XY):

Stage Part Number: H105ANN1* (154mm x 154mm)
 Specimen Holders: H2117 (Solid aluminum plate)

Stage Part Number: H101ANN1* (114mm x 75mm)
 Specimen Holders: H230 (Solid aluminum plate)

*Note: Requires encoder option for controller. Linear scales are 0.1 micron resolution.

- Notes: 1. Other specimen holders available (see price list).
 2. 1mm pitch screws are available as an option.
 3. Adjustable limit switches

MOTORIZED FOCUS CONTROL (Z):

Focus Motor: H122
 Focus Sleeve: H2531P
 Solid Coupler Kit: Please call

FILTER WHEEL AND SHUTTERS:

Please call Prior Scientific for more information.

STAND ALONE CONTROLLER:

H30Z Focus only
 H30XY Stage only
 H30XYZ Stage and focus drive
 Autofocus: Replace "Z" with "A" e.g. H30A
 1 filter wheel, 3 shutters: Add "1" e.g. H30XYZ1
 2 filter wheel, 3 shutters: Add "2" e.g. H30XYZ2
 3 filter wheel, 3 shutters: Add "3" e.g. H30XYZ3
 3 shutter only: Add "5" e.g. H30XYZ5
 Encoder input: Add "E" e.g. H30XYE

Note: H130 Controllers include stage cable and PC RS232 cable.

PCI CARD CONTROLLER: (REQUIRES CUSTOMER SUPPLIED PC)

HP2PC1 PCI control for XY, focus, three filter wheels and analog 0-10V NanoScanZ Piezo control
 HP2ETL PCI slot adapter for encoders and TTL
 HP1ENC Encoder adapter cable

JOYSTICKS:

CS152Z Digipot Control Unit for Z only
 CS152V2 Joystick Control Unit for XY system
 CS152EF Joystick Control Unit for XY and Digipot for Z
 CS152KB Programmable touch screen controller
 CS100K Manual keypad control for 2 filter wheels and 3 shutters

NIKON MM40/L3 AND MM60/L3 (154MM X 154MM TRAVEL)

MOTORIZED STAGE (XY):

Stage Part Number: H105AFNN (2mm pitch)
Stage Part Number: H105BFNN (5mm pitch)
Specimen Holders: H231 (Solid aluminum plate)
Limit Switches: Adjustable

ENCODED STAGE (XY):

Stage Part Number: H105AFN1* (0.1 micron resolution)
Stage Part Number: H105BFN2* (0.5 micron resolution)
Specimen Holders: H231 (Solid aluminum plate)
Limit Switches: Adjustable

*Note: Requires encoder option for controller.

Notes: 1. Other specimen holders available (see price list).

MOTORIZED FOCUS CONTROL (Z):

Focus Motor: H122
Focus Sleeve: SP019
Solid Coupler Kit: Not available

FILTER WHEEL AND SHUTTERS:

Please call Prior Scientific for more information.

STAND ALONE CONTROLLER:

H30Z Focus only
H30XY Stage only
H30XYZ Stage and focus drive
Autofocus: Replace "Z" with "A" e.g. H30A
1 filter wheel, 3 shutters: Add "1" e.g. H30XYZ1
2 filter wheel, 3 shutters: Add "2" e.g. H30XYZ2
3 filter wheel, 3 shutters: Add "3" e.g. H30XYZ3
3 shutter only: Add "5" e.g. H30XYZ5
Encoder input: Add "E" e.g. H30XE

Note: H130 Controllers include stage cable and PC RS232 cable.

PCI CARD CONTROLLER: (REQUIRES CUSTOMER SUPPLIED PC)

HP2PC1 PCI control for XY, focus, three filter wheels and analog 0-10V NanoScanZ Piezo control
HP2ETL PCI slot adapter for encoders and TTL
HP1ENC Encoder adapter cable

JOYSTICKS:

CS152Z Digipot Control Unit for Z only
CS152V2 Joystick Control Unit for XY system
CS152EF Joystick Control Unit for XY and Digipot for Z
CS152KB Programmable touch screen controller
CS100K Manual keypad control for 2 filter wheels and 3 shutters

NIKON OPTIPHOT 300/L300 (302MM X 302MM TRAVEL)

MOTORIZED STAGE (XY):

Stage Part Number: H112ARNN (2mm pitch)
Stage Part Number: H112BRNN (5mm pitch)
Specimen Holders: H233
Limit Switches: Fixed

ENCODED STAGE (XY):

Stage Part Number: H112ARN1* (0.1 micron resolution)
Stage Part Number: H112BRN2* (0.5 micron resolution)
Specimen Holders: H233
Limit Switches: Fixed

*Note: Requires encoder option for controller.

Notes: 1. Other specimen holders available (see price list).

MOTORIZED FOCUS CONTROL (Z):

Focus Motor: H122
Focus Sleeve: H556
Solid Coupler Kit: H122KON

FILTER WHEEL AND SHUTTERS:

Please call Prior Scientific for more information.

STAND ALONE CONTROLLER:

H30Z Focus only
H30XY Stage only
H30XYZ Stage and focus drive
Autofocus: Replace "Z" with "A" e.g. H30A
1 filter wheel, 3 shutters: Add "1" e.g. H30XYZ1
2 filter wheel, 3 shutters: Add "2" e.g. H30XYZ2
3 filter wheel, 3 shutters: Add "3" e.g. H30XYZ3
3 shutter only: Add "5" e.g. H30XYZ5
Encoder input: Add "E" e.g. H30XYE

Note: H130 Controllers include stage cable and PC RS232 cable.

PCI CARD CONTROLLER: (REQUIRES CUSTOMER SUPPLIED PC)

HP2PC1 PCI control for XY, focus, three filter wheels and analog 0-10V NanoScanZ Piezo control
HP2ETL PCI slot adapter for encoders and TTL
HP1ENC Encoder adapter cable

JOYSTICKS:

CS152Z Digipot Control Unit for Z only
CS152V2 Joystick Control Unit for XY system
CS152EF Joystick Control Unit for XY and Digipot for Z
CS152KB Programmable touch screen controller
CS100K Manual keypad control for 2 filter wheels and 3 shutters

NIKON SMZ 1500 STEREO (114MM X 75MM TRAVEL)

MOTORIZED STAGE (XY):

Stage Part Number: H101ANNN
 Specimen Holders: H224LP (1x3 slide holder)
 Limit Switches: Adjustable
 Ball Screws: 2mm pitch

ENCODED STAGE (XY):

Stage Part Number: H101ANN1* (0.1 μ m resolution)
 Specimen Holders: H224LP (1x3 slide holder)
 Limit Switches: Adjustable
 Ball Screws: 2mm pitch

*Note: Requires encoder option for controller.

- Notes: 1. Requires Nikon adapter part number 83417 supplied by others.
 2. Other specimen holders available (see price list).
 3. 1mm pitch screws are available as an option.

MOTORIZED FOCUS CONTROL (Z):

Focus Motor: H122S15
 Focus Sleeve: Included
 Solid Coupler Kit: Included
 Limit Switch Assembly: LMTS15

FOCUS MOTOR WITH LINEAR ENCODER PROBE:

Not available.

FILTER WHEEL AND SHUTTERS:

| Application | Adapter | Filter Wheel ^ø | Shutter (on Filter Wheel) | Shutter (Stand Alone) |
|------------------|---------|---------------------------|------------------------------|--------------------------|
| Excitation, 25mm | HF235 | HF110 | HF200HT | HF202HT |
| Excitation, 35mm | HF235 | HF108 | HF201HT | HF204HT |
| Emission | N/A | N/A | N/A | N/A |
| Transmitted | N/A | N/A | N/A | N/A |

^øHF110 has ten positions, the HF108 has eight positions.

STAND ALONE CONTROLLER:

H30Z Focus only
 H30XY Stage only
 H30XYZ Stage and focus drive
 1 filter wheel, 3 shutters: Add "1" e.g. H30XYZ1
 2 filter wheel, 3 shutters: Add "2" e.g. H30XYZ2
 3 shutter only: Add "5" e.g. H30XYZ5
 Encoder input: Add "E" e.g. H30XYE

Note: H130 Controllers include stage cable and PC RS232 cable.

PCI CARD CONTROLLER: (REQUIRES CUSTOMER SUPPLIED PC)

HP2PC1 PCI control for XY, focus, three filter wheels and analog 0-10V NanoScanZ Piezo control
 HP2ETL PCI slot adapter for encoders and TTL
 HP1ENC Encoder adapter cable

Note: PCI Controller should only be used for XY only systems. For focus control, use stand alone H129 controller.

JOYSTICKS:

CS152Z Digipot Control Unit for Z only
 CS152V2 Joystick Control Unit for XY system
 CS152EF Joystick Control Unit for XY and Digipot for Z
 CS152KB Programmable touch screen controller (H130 Only)
 CS100K Manual keypad control for 2 filter wheels and 3 shutters (H130 Only)

MOTORIZED STAGE (XY):

Stage Part Number: H107ACNN
 Specimen Holders: H224R (1x3 slide holder)
 H223R (well plate holder)
 H229 (variable petri dish holder)
 Limit Switches: Adjustable
 Ball Screws: 2mm pitch

ENCODED STAGE (XY):

Stage Part Number: H107ACN1* (0.1 µm resolution)
 Specimen Holders: H224R (1x3 slide holder)
 H223R (well plate holder)
 H229 (variable petri dish holder)
 Limit Switches: Adjustable
 Ball Screws: 2mm pitch

*Note: Requires encoder option for controller.

Notes: 1. Other specimen holders available (see price list). Use “R” versions where available.
 2. 1mm pitch screws are available as an option.

MOTORIZED FOCUS CONTROL (Z):

Focus Motor: H122
 Focus Sleeve: H556
 Solid Coupler Kit: H122KON

FOCUS MOTOR WITH LINEAR ENCODER PROBE:

Focus Motor: H122ENK* (50 nanometer resolution)
 Focus Sleeve: H556
 Solid Coupler Kit: H122KON

*Note: Requires adapter sleeve and encoder option for controller.

FILTER WHEEL AND SHUTTERS:

| Application | Adapter | Filter Wheel ^A | Shutter (on Filter Wheel) | Shutter (Stand Alone) |
|------------------|---------|---------------------------|------------------------------|--------------------------|
| Excitation, 25mm | HF220 | HF110 | HF200HT | HF202HT |
| Excitation, 35mm | HF220 | HF108 | HF201HT | HF204HT |
| Emission | HF223 | HF110 | N/A | N/A |
| Transmitted | HF221 | N/A | N/A | HF204HT |

^A HF110 has ten positions, the HF108 has eight positions.

STAND ALONE CONTROLLER:

H30Z Focus only
 H30XY Stage only
 H30XYZ Stage and focus drive
 Autofocus: Replace “Z” with “A” e.g. H30A
 1 filter wheel, 3 shutters: Add “1” e.g. H30XYZ1
 2 filter wheel, 3 shutters: Add “2” e.g. H30XYZ2
 3 filter wheel, 3 shutters: Add “3” e.g. H30XYZ3
 3 shutter only: Add “5” e.g. H30XYZ5
 Encoder input: Add “E” e.g. H30XE

Note: H130 Controllers include stage cable and PC RS232 cable.

PCI CARD CONTROLLER: (REQUIRES CUSTOMER SUPPLIED PC)

HP2PC1 PCI control for XY, focus, three filter wheels and analog 0-10V NanoScanZ Piezo control
 HP2ETL PCI slot adapter for encoders and TTL
 HP1ENC Encoder adapter cable

JOYSTICKS:

CS152Z Digipot Control Unit for Z only
 CS152V2 Joystick Control Unit for XY system
 CS152EF Joystick Control Unit for XY and Digipot for Z
 CS152KB Programmable touch screen controller
 CS100K Manual keypad control for 2 filter wheels and 3 shutters

NIKON TE2000 (114MM X 75MM TRAVEL)

MOTORIZED STAGE (XY):

Stage Part Number: H117P2TE
 Specimen Holders: H224R (1x3 slide holder)
 H223XR (well plate holder)
 H229 (variable petri dish holder)
 Limit Switches: Adjustable
 Ball Screws: 2mm pitch

ENCODED STAGE (XY):

Stage Part Number: H117E2TE* (0.1 µm resolution)
 Specimen Holders: H224R (1x3 slide holder)
 H223XR (well plate holder)
 H229 (variable petri dish holder)
 Limit Switches: Adjustable
 Ball Screws: 2mm pitch

*Note: Requires encoder option for controller.

Notes: 1. Other specimen holders available (see price list). Use “R” versions where available.
 2. 1mm pitch screws are available as an option.

MOTORIZED FOCUS CONTROL (Z):

Focus Motor: H122
 Focus Sleeve: H2531P
 Solid Coupler Kit: H122KN2K

FOCUS MOTOR WITH LINEAR ENCODER PROBE:

Focus Motor: H122EK2K* (50 nanometer resolution)
 Focus Sleeve: H2531P
 Solid Coupler Kit: H122KN2K
 *Note: Requires adapter sleeve and encoder option for controller.

FILTER WHEEL AND SHUTTERS:

| Application | Adapter | Filter Wheel ^A | Shutter (on Filter Wheel) | Shutter (Stand Alone) |
|------------------|---------|---------------------------|------------------------------|--------------------------|
| Excitation, 25mm | HF220 | HF110 | HF200HT | HF202HT |
| Excitation, 35mm | HF220 | HF108 | HF201HT | HF204HT |
| Emission | HF227 | HF110 | N/A | N/A |
| Transmitted | HF224 | N/A | N/A | HF204HT |

^A HF110 has ten positions, the HF108 has eight positions.

STAND ALONE CONTROLLER:

H30Z Focus only
 H30XY Stage only
 H30XYZ Stage and focus drive
 Autofocus: Replace “Z” with “A” e.g. H30A
 1 filter wheel, 3 shutters: Add “1” e.g. H30XYZ1
 2 filter wheel, 3 shutters: Add “2” e.g. H30XYZ2
 3 filter wheel, 3 shutters: Add “3” e.g. H30XYZ3
 3 shutter only: Add “5” e.g. H30XYZ5
 Encoder input: Add “E” e.g. H30XYE

Note: H130 Controllers include stage cable and PC RS232 cable.

PCI CARD CONTROLLER: (REQUIRES CUSTOMER SUPPLIED PC)

HP2PC1 PCI control for XY, focus, three filter wheels and analog 0-10V NanoScanZ Piezo control
 HP2ETL PCI slot adapter for encoders and TTL
 HP1ENC Encoder adapter cable

JOYSTICKS:

CS152Z Digipot Control Unit for Z only
 CS152V2 Joystick Control Unit for XY system
 CS152EF Joystick Control Unit for XY and Digipot for Z
 CS152KB Programmable touch screen controller
 CS100K Manual keypad control for 2 filter wheels and 3 shutters

NIKON Ti (114MM X 75MM TRAVEL)

MOTORIZED STAGES (XY):

| Part Number | Product Description |
|-------------|--|
| H117P2NN | ProScan™II flat top stage |
| H117P1N4 | ProScan™II flat top stage with 1mm ball screws |
| H117E2NN | ProScan™II flat top stage with 100 nanometer resolution encoders |
| H117E1N5 | ProScan™II flat top stage with 50 nanometer resolution encoders |

MOTORIZED FOCUS:

| Part Number | Product Description |
|-------------|--|
| H122 | Focus motor |
| H2975P | Focus sleeve for the Nikon Ti |
| H122KN2K | Solid focus coupler kit for the Nikon Ti |
| H122EKNN | Focus motor with linear encoder probe, focus sleeve and coupler kit for the Nikon Ti |

FILTER WHEEL AND SHUTTERS:

| Application | Adapter | Filter Wheel ^Δ | Shutter (on Filter Wheel) | Shutter (Stand Alone) |
|------------------|------------------|---------------------------|---------------------------|-----------------------|
| Excitation, 25mm | HF220 | HF110 | HF200HT | HF202HT |
| Excitation, 35mm | HF220 | HF108 | HF201HT | HF204HT |
| Emission | HF255/HF248* | HF110 | N/A | N/A |
| Transmitted | HF224**/HF254*** | N/A | N/A | HF204HT |

^Δ HF110 has ten positions, the HF108 has eight positions.

*HF248 stage up kit for mounting HF110 below turret **HF224 mounts above the condenser. ***HF254 mounts at the illuminator.

LUMEN FLUORESCENCE ILLUMINATION SYSTEMS:

| Part Number | Product Description |
|-------------|--|
| L200NI2 | Lumen 200 Illumination System with manual light attenuator, two meter light guide, microscope adapter and 200 watt bulb. |
| L200NI3 | Lumen 200 Illumination System with manual light attenuator, three meter light guide, microscope adapter and 200 watt bulb. |
| L200PRONI2 | Lumen 200PRO Illumination System with motorized high speed 25 mm diameter, six position filter wheel, attenuator, two meter light guide, microscope adapter and 200 watt bulb. |
| L200PRONI3 | Lumen 200PRO Illumination System with motorized high speed 25 mm diameter, six position filter wheel, attenuator, three meter light guide, microscope adapter and 200 watt bulb. |

NANOSCAN NANOPositionING PIEZO Z STAGE:

| Part Number | Product Description |
|-------------|--|
| NZ100CE | Nanopositioning Piezo Z stage, 100 micron travel |
| NZ200CE | Nanopositioning Piezo Z stage, 200 micron travel |
| NZ500CE | Nanopositioning Piezo Z stage, 500 micron travel |

Please see ProScan™II price list for controller, joystick and sample holder information.

NIKON TS100 (112MM X 70MM TRAVEL)

MOTORIZED STAGE (XY):

Stage Part Number: H107NTS
Specimen Holders: H224RLP (1x3 slide holder)
H223R (well plate holder)
H229 (variable petri dish holder)

Limit Switches: Adjustable

Ball Screws: 2mm pitch

Notes:

1. Transmitted light illuminator must be removed and reconnected to motorized stage. This will require rewiring of illuminator.
2. Other specimen holders available (see price list). Use “R” versions where available.
3. 1mm pitch screws are available as an option.

MOTORIZED FOCUS CONTROL (Z):

Focus Motor: H122

Focus Sleeve: H528

FILTER WHEEL AND SHUTTERS:

| Application | Adapter | Filter Wheel ^ø | Shutter (on Filter Wheel) | Shutter (Stand Alone) |
|------------------|---------|---------------------------|---------------------------|-----------------------|
| Excitation, 25mm | HP1122 | HF110 | HF200HT | HF202HT |
| Excitation, 35mm | HP1122 | HF108 | HF201HT | HF204HT |
| Emission | HP1120 | HF110 | N/A | N/A |
| Transmitted | HF229 | N/A | N/A | HF204HT |

^øHF110 has ten positions, the HF108 has eight positions.

STAND ALONE CONTROLLER:

H30Z Focus only
H30XY Stage only
H30XYZ Stage and focus drive
Autofocus: Replace “Z” with “A” e.g. H30A
1 filter wheel, 3 shutters: Add “1” e.g. H30XYZ1
2 filter wheel, 3 shutters: Add “2” e.g. H30XYZ2
3 filter wheel, 3 shutters: Add “3” e.g. H30XYZ3
3 shutter only: Add “5” e.g. H30XYZ5
Encoder input: Add “E” e.g. H30XYE

Note: H130 Controllers include stage cable and PC RS232 cable.

PCI CARD CONTROLLER: (REQUIRES CUSTOMER SUPPLIED PC)

HP2PC1 PCI control for XY, focus, three filter wheels and analog 0-10V NanoScanZ Piezo control
HP2ETL PCI slot adapter for encoders and TTL
HP1ENC Encoder adapter cable

JOYSTICKS:

CS152Z Digipot Control Unit for Z only
CS152V2 Joystick Control Unit for XY system
CS152EF Joystick Control Unit for XY and Digipot for Z
CS152KB Programmable touch screen controller
CS100K Manual keypad control for 2 filter wheels and 3 shutters

OLYMPUS AX70 (114MM X 75MM TRAVEL)

MOTORIZED STAGE (XY):

Stage Part Number: H101ANNN
Specimen Holders: H224PRV (1x3 slide holder)
Limit Switches: Adjustable
Ball Screws: 2mm pitch

ENCODED STAGE (XY):

Stage Part Number: H101ANN1* (0.1 µm resolution)
Specimen Holders: H224PRV (1x3 slide holder)
Limit Switches: Adjustable
Ball Screws: 2mm pitch

*Note: Requires encoder option for controller.

- Notes: 1. Other specimen holders available (see price list). Use “PRV” when available.
2. 1mm pitch screws are available as an option.
3. Please specify motorized condenser or standard BX mount.

MOTORIZED FOCUS CONTROL (Z):

Focus Motor: H122
Focus Sleeve: H807
Solid Coupler Kit: H122KON

FOCUS MOTOR WITH LINEAR ENCODER PROBE:

Focus Motor: H122EK* (50 nanometer resolution)
Focus Sleeve: H807
Solid Coupler Kit: H122KON

*Note: Requires adapter sleeve and encoder option for controller.

FILTER WHEEL AND SHUTTERS:

| Application | Adapter | Filter Wheel ^A | Shutter (on Filter Wheel) | Shutter (Stand Alone) |
|------------------|---------|---------------------------|------------------------------|--------------------------|
| Excitation, 25mm | HF235 | HF110 | HF200HT | HF202HT |
| Excitation, 35mm | HF235 | HF108 | HF201HT | HF204HT |
| Emission | HF239* | HF110 | N/A | N/A |
| Transmitted | HF238 | N/A | N/A | HF204HT |

*Adapter places the filter wheel underneath the head of the microscope.

^A HF110 has ten positions, the HF108 has eight positions.

STAND ALONE CONTROLLER:

H30Z Focus only
H30XY Stage only
H30XYZ Stage and focus drive
Autofocus: Replace “Z” with “A” e.g. H30A
1 filter wheel, 3 shutters: Add “1” e.g. H30XYZ1
2 filter wheel, 3 shutters: Add “2” e.g. H30XYZ2
3 filter wheel, 3 shutters: Add “3” e.g. H30XYZ3
3 shutter only: Add “5” e.g. H30XYZ5
Encoder input: Add “E” e.g. H30XYE

Note: H130 Controllers include stage cable and PC RS232 cable.

PCI CARD CONTROLLER: (REQUIRES CUSTOMER SUPPLIED PC)

HP2PC1 PCI control for XY, focus, three filter wheels and analog 0-10V NanoScanZ Piezo control
HP2ETL PCI slot adapter for encoders and TTL
HP1ENC Encoder adapter cable

JOYSTICKS:

CS152Z Digipot Control for focus only
CS152V2 Joystick Control Unit for XY system
CS152EF Joystick Control Unit for XY system and digipot for focus
CS152KB Programmable touch screen controller
CS100K Manual keypad control for 2 filter wheels and 3 shutters

OLYMPUS AX80 (114MM X 75MM TRAVEL)

MOTORIZED STAGE (XY):

Stage Part Number: H101ANNN
Specimen Holders: H224PRV (1x3 slide holder)
Limit Switches: Adjustable
Ball Screws: 2mm pitch

ENCODED STAGE (XY):

Stage Part Number: H101ANN1* (0.1 µm resolution)
Specimen Holders: H224PRV (1x3 slide holder)
Limit Switches: Adjustable
Ball Screws: 2mm pitch

*Note: Requires encoder option for controller.

- Notes: 1. Other specimen holders available (see price list). Use “PRV” when available.
2. 1mm pitch screws are available as an option.
3. Please specify motorized condenser or standard BX mount.

MOTORIZED FOCUS CONTROL (Z):

Microscope has built-in focus control. Prior focus control is not available on this microscope.

FILTER WHEEL AND SHUTTERS:

| Application | Adapter | Filter Wheel [^] | Shutter (on Filter Wheel) | Shutter (Stand Alone) |
|------------------|---------|---------------------------|---------------------------|-----------------------|
| Excitation, 25mm | HF235 | HF110 | HF200HT | HF202HT |
| Excitation, 35mm | HF235 | HF108 | HF201HT | HF204HT |
| Emission | HF239* | HF110 | N/A | N/A |
| Transmitted | HF238 | N/A | N/A | HF204HT |

*Adapter places the filter wheel underneath the head of the microscope.

[^] HF110 has ten positions, the HF108 has eight positions.

STAND ALONE CONTROLLER:

H30XY Stage only
1 filter wheel, 3 shutters: Add “1” e.g. H30XY1
2 filter wheel, 3 shutters: Add “2” e.g. H30XY2
3 filter wheel, 3 shutters: Add “3” e.g. H30XY3
3 shutter only: Add “5” e.g. H30XY5
Encoder input: Add “E” e.g. H30XYE

Note: H130 Controllers include stage cable and PC RS232 cable.

JOYSTICKS:

CS152V2 Joystick Control Unit for XY system
CS152KB Programmable touch screen controller
CS100K Manual keypad control for 2 filter wheels and 3 shutters

PCI CARD CONTROLLER: (REQUIRES CUSTOMER SUPPLIED PC)

HP2PC1 PCI control for XY, focus, three filter wheels and analog 0-10V NanoScanZ Piezo control
HP2ETL PCI slot adapter for encoders and TTL
HP1ENC Encoder adapter cable

OLYMPUS BX40/50/60 (114MM X 75MM TRAVEL)

MOTORIZED STAGE (XY):

Stage Part Number: H101ANNN
Specimen Holders: H224 (1x3 slide holder)
Limit Switches: Adjustable
Ball Screws: 2mm pitch

ENCODED STAGE (XY):

Stage Part Number: H101ANN1* (0.1 µm resolution)
Specimen Holders: H224 (1x3 slide holder)
Limit Switches: Adjustable
Ball Screws: 2mm pitch

*Note: Requires encoder option for controller.

- Notes: 1. Other specimen holders available (see price list).
2. 1mm pitch screws are available as an option.

MOTORIZED FOCUS CONTROL (Z):

Focus Motor: H122
Focus Sleeve: H807
Solid Coupler Kit: H122KON

FOCUS MOTOR WITH LINEAR ENCODER PROBE:

Focus Motor: H122EK* (50 nanometer resolution)
Focus Sleeve: H807
Solid Coupler Kit: H122KON

*Note: Requires adapter sleeve and encoder option for controller.

FILTER WHEEL AND SHUTTERS:

| Application | Adapter | Filter Wheel ^Δ | Shutter (on Filter Wheel) | Shutter (Stand Alone) |
|------------------|-------------|---------------------------|------------------------------|--------------------------|
| Excitation, 25mm | HF235 | HF110 | HF200HT | HF202HT |
| Excitation, 35mm | HF235 | HF108 | HF201HT | HF204HT |
| Emission | HF239* | HF110 | N/A | N/A |
| Transmitted | Please Call | N/A | N/A | HF204HT |

* Adapter places the filter wheel underneath the head of the microscope.

^Δ HF110 has ten positions, the HF108 has eight positions.

STAND ALONE CONTROLLER:

H30Z Focus only
H30XY Stage only
H30XYZ Stage and focus drive
Autofocus: Replace "Z" with "A" e.g. H30A
1 filter wheel, 3 shutters: Add "1" e.g. H30XYZ1
2 filter wheel, 3 shutters: Add "2" e.g. H30XYZ2
3 filter wheel, 3 shutters: Add "3" e.g. H30XYZ3
3 shutter only: Add "5" e.g. H30XYZ5
Encoder input: Add "E" e.g. H30XYE

Note: H130 Controllers include stage cable and PC RS232 cable.

PCI CARD CONTROLLER: (REQUIRES CUSTOMER SUPPLIED PC)

HP2PC1 PCI control for XY, focus, three filter wheels and analog 0-10V NanoScanZ Piezo control
HP2ETL PCI slot adapter for encoders and TTL
HP1ENC Encoder adapter cable

JOYSTICKS:

CS152Z Digipot Control Unit for Z only
CS152V2 Joystick Control Unit for XY system
CS152EF Joystick Control Unit for XY system and digipot
CS152KB Programmable touch screen controller
CS100K Manual keypad control for 2 filter wheels and 3 shutters

OLYMPUS BX41 (114MM X 75MM TRAVEL)

MOTORIZED STAGE (XY):

Stage Part Number: H101ANNN
 Specimen Holders: H224 (1x3 slide holder)
 Limit Switches: Adjustable
 Ball Screws: 2mm pitch

Notes:

1. Other specimen holders available (see price list).
2. 1mm pitch screws are available as an option.

MOTORIZED FOCUS CONTROL (Z):

Focus Motor: H122
 Focus Sleeve: H807
 Solid Coupler Kit: H122KBIX

ENCODED STAGE (XY):

Stage Part Number: H101ANN1* (0.1 µm resolution)
 Specimen Holders: H224 (1x3 slide holder)
 Limit Switches: Adjustable
 Ball Screws: 2mm pitch

*Note: Requires encoder option for controller.

FOCUS MOTOR WITH LINEAR ENCODER PROBE:

Focus Motor: H122EKB2 (50 nanometer resolution)
 Focus Sleeve: H807
 Solid Coupler Kit: H122KBIX

*Note: Requires adapter sleeve and encoder option for controller.

FILTER WHEEL AND SHUTTERS:

| Application | Adapter | Filter Wheel [^] | Shutter (on Filter Wheel) | Shutter (Stand Alone) |
|------------------|-------------|---------------------------|------------------------------|--------------------------|
| Excitation, 25mm | HF235 | HF110 | HF200HT | HF202HT |
| Excitation, 35mm | HF235 | HF108 | HF201HT | HF204HT |
| Emission | HF239* | HF110 | N/A | N/A |
| Transmitted | Please Call | N/A | N/A | HF204HT |

*Adapter places the filter wheel underneath the head of the microscope.

[^] HF110 has ten positions, the HF108 has eight positions.

STAND ALONE CONTROLLER:

H30Z Focus only
 H30XY Stage only
 H30XYZ Stage and focus drive
 Autofocus: Replace "Z" with "A" e.g. H30A
 1 filter wheel, 3 shutters: Add "1" e.g. H30XYZ1
 2 filter wheel, 3 shutters: Add "2" e.g. H30XYZ2
 3 filter wheel, 3 shutters: Add "3" e.g. H30XYZ3
 3 shutter only: Add "5" e.g. H30XYZ5
 Encoder input: Add "E" e.g. H30XE

Note: H130 Controllers include stage cable and PC RS232 cable.

JOYSTICKS:

CS152Z Digipot Control Unit for Z only
 CS152V2 Joystick Control Unit for XY system
 CS152EF Joystick Control Unit for XY system and digipot
 CS152KB Programmable touch screen controller
 CS100K Manual keypad control for 2 filter wheels and 3 shutters

PCI CARD CONTROLLER: (REQUIRES CUSTOMER SUPPLIED PC)

HP2PC1 PCI control for XY, focus, three filter wheels and analog 0-10V NanoScanZ Piezo control
 HP2ETL PCI slot adapter for encoders and TTL
 HP1ENC Encoder adapter cable

OLYMPUS BX51 (114MM X 75MM TRAVEL)

MOTORIZED STAGE (XY):

Stage Part Number: H101ANNN
 Specimen Holders: H224 (1x3 slide holder)
 Limit Switches: Adjustable
 Ball Screws: 2mm pitch

ENCODED STAGE (XY):

Stage Part Number: H101ANN1* (0.1 µm resolution)
 Specimen Holders: H224 (1x3 slide holder)
 Limit Switches: Adjustable
 Ball Screws: 2mm pitch

*Note: Requires encoder option for controller.

Notes: 1. Other specimen holders available (see price list).
 2. 1mm pitch screws are available as an option.

MOTORIZED FOCUS CONTROL (Z):

Focus Motor: H122
 Focus Sleeve: H807
 Solid Coupler Kit: H122KBIX

FOCUS MOTOR WITH LINEAR ENCODER PROBE:

Focus Motor: H122EKB2 (50 nanometer resolution)
 Focus Sleeve: H807-included
 Solid Coupler Kit: H122KBIX

*Note: Requires adapter sleeve and encoder option for controller.

FILTER WHEEL AND SHUTTERS:

| Application | Adapter | Filter Wheel ^Δ | Shutter (on Filter Wheel) | Shutter (Stand Alone) |
|------------------|---------|---------------------------|------------------------------|--------------------------|
| Excitation, 25mm | HF235 | HF110 | HF200HT | HF202HT |
| Excitation, 35mm | HF235 | HF108 | HF201HT | HF204HT |
| Emission | HF239* | HF110 | N/A | N/A |
| Transmitted | HF238 | N/A | N/A | HF204HT |

*Adapter places the filter wheel underneath the head of the microscope.

^Δ HF110 has ten positions, the HF108 has eight positions.

STAND ALONE CONTROLLER:

H30Z Focus only
 H30XY Stage only
 H30XYZ Stage and focus drive
 Autofocus: Replace "Z" with "A" e.g. H30A
 1 filter wheel, 3 shutters: Add "1" e.g. H30XYZ1
 2 filter wheel, 3 shutters: Add "2" e.g. H30XYZ2
 3 filter wheel, 3 shutters: Add "3" e.g. H30XYZ3
 3 shutter only: Add "5" e.g. H30XYZ5
 Encoder input: Add "E" e.g. H30XYE

Note: H130 Controllers include stage cable and PC RS232 cable.

PCI CARD CONTROLLER: (REQUIRES CUSTOMER SUPPLIED PC)

HP2PC1 PCI control for XY, focus, three filter wheels and analog 0-10V NanoScanZ Piezo control
 HP2ETL PCI slot adapter for encoders and TTL
 HP1ENC Encoder adapter cable

JOYSTICKS:

CS152Z Digipot Control Unit for Z only
 CS152V2 Joystick Control Unit for XY system
 CS152EF Joystick Control Unit for XY system and digipot
 CS152KB Programmable touch screen controller
 CS100K Manual keypad control for 2 filter wheels and 3 shutters

OLYMPUS BX51WI (114MM X 75MM TRAVEL)

MOTORIZED STAGE (XY):

Stage Part Number: H117P2BX
Specimen Holders: H229 (Petri dish holder)
Limit Switches: Adjustable
Ball Screws: 2mm pitch

ENCODED STAGE (XY):

Stage Part Number: H117E2BX* (0.1 µm resolution)
Specimen Holders: H229 (Petri dish holder)
Limit Switches: Adjustable
Ball Screws: 2mm pitch

*Note: Requires encoder option for controller.

Notes: 1. Other specimen holders available (see price list).
2. 1mm pitch screws are available as an option.

MOTORIZED FOCUS CONTROL (Z):

Focus Motor: H122
Focus Sleeve: H807
Solid Coupler Kit: H122KBIX

FOCUS MOTOR WITH LINEAR ENCODER PROBE:

Not available.

FILTER WHEEL AND SHUTTERS:

| Application | Adapter | Filter Wheel ^A | Shutter (on Filter Wheel) | Shutter (Stand Alone) |
|------------------|---------|---------------------------|------------------------------|--------------------------|
| Excitation, 25mm | HF235 | HF110 | HF200HT | HF202HT |
| Excitation, 35mm | HF235 | HF108 | HF201HT | HF204HT |
| Emission | HF239* | HF110 | N/A | N/A |
| Transmitted | HF238 | N/A | N/A | HF204HT |

*Adapter places the filter wheel underneath the head of the microscope.

^A HF110 has ten positions, the HF108 has eight positions.

STAND ALONE CONTROLLER:

H30Z Focus only
H30XY Stage only
H30XYZ Stage and focus drive
Autofocus: Replace "Z" with "A" e.g. H30A
1 filter wheel, 3 shutters: Add "1" e.g. H30XYZ1
2 filter wheel, 3 shutters: Add "2" e.g. H30XYZ2
3 filter wheel, 3 shutters: Add "3" e.g. H30XYZ3
3 shutter only: Add "5" e.g. H30XYZ5
Encoder input: Add "E" e.g. H30XYE
Note: H130 Controllers include stage cable and PC RS232 cable.

PCI CARD CONTROLLER: (REQUIRES CUSTOMER SUPPLIED PC)

HP2PC1 PCI control for XY, focus, three filter wheels and analog 0-10V NanoScanZ Piezo control
HP2ETL PCI slot adapter for encoders and TTL
HP1ENC Encoder adapter cable

JOYSTICKS:

CS152Z Digipot Control Unit for Z only
CS152V2 Joystick Control Unit for XY system
CS152EF Joystick Control Unit for XY system and digipot
CS152KB Programmable touch screen controller
CS100K Manual keypad control for 2 filter wheels and 3 shutters

OLYMPUS BX61 (114MM X 75MM TRAVEL)

MOTORIZED STAGE (XY):

Stage Part Number: H101ANNN
Specimen Holders: H224 (1x3 slide holder)
Limit Switches: Adjustable
Ball Screws: 2mm pitch

ENCODED STAGE (XY):

Stage Part Number: H101ANN1 (0.1 µm resolution)
Specimen Holders: H224 (1x3 slide holder)
Limit Switches: Adjustable
Ball Screws: 2mm pitch

*Note: Requires encoder option for controller.

- Notes: 1. Other specimen holders available (see price list).
2. 1mm pitch screws are available as an option.

MOTORIZED FOCUS CONTROL (Z):

Microscope has built-in focus control. Prior focus control is not available on this microscope.

FILTER WHEEL AND SHUTTERS:

| Application | Adapter | Filter Wheel [^] | Shutter (on Filter Wheel) | Shutter (Stand Alone) |
|------------------|---------|---------------------------|------------------------------|--------------------------|
| Excitation, 25mm | HF235 | HF110 | HF200HT | HF202HT |
| Excitation, 35mm | HF235 | HF108 | HF201HT | HF204HT |
| Emission | HF239* | HF110 | N/A | N/A |
| Transmitted | HF238 | N/A | N/A | HF204HT |

*Adapter places the filter wheel underneath the head of the microscope.

[^] HF110 has ten positions, the HF108 has eight positions.

STAND ALONE CONTROLLER:

H30XY Stage only
1 filter wheel, 3 shutters: Add "1" e.g. H30XY1
2 filter wheel, 3 shutters: Add "2" e.g. H30XY2
3 filter wheel, 3 shutters: Add "3" e.g. H30XY3
3 shutter only: Add "5" e.g. H30XY5
Encoder input: Add "E" e.g. H30XYE

Note: H130 Controllers include stage cable and PC RS232 cable.

JOYSTICKS:

CS152V2 Joystick Control Unit for XY system
CS152KB Programmable touch screen controller
CS100K Manual keypad control for 2 filter wheels and 3 shutters

PCI CARD CONTROLLER: (REQUIRES CUSTOMER SUPPLIED PC)

HP2PC1 PCI control for XY, focus, three filter wheels and analog 0-10V NanoScanZ Piezo control
HP2ETL PCI slot adapter for encoders and TTL
HP1ENC Encoder adapter cable

MOTORIZED STAGE (XY):

Stage Part Number: H117P2GX*
 Specimen Holders: H230 (solid aluminum plate)
 Limit Switches: Adjustable
 Ball Screws: 2mm pitch

*Note: Please call if using a motorized turret.

ENCODED STAGE (XY):

Stage Part Number: H117E2GX* (0.1 µm resolution)
 Specimen Holders: H230 (solid aluminum plate)
 Limit Switches: Adjustable
 Ball Screws: 2mm pitch

*Note: Requires encoder option for controller. Not available with motorized turret.

- Notes: 1. Other specimen holders available (see price list). Use “R” versions where available.
 2. 1mm pitch screws are available as an option.
 3. Please call if using a motorized turret.

MOTORIZED FOCUS CONTROL (Z):

Focus Motor: H122
 Focus Sleeve: H807
 Solid Coupler Kit: H122KBIX

FOCUS MOTOR WITH LINEAR ENCODER PROBE:

Focus Motor: H122EKIX* (50 nanometer resolution)
 Focus Sleeve: H807
 Solid Coupler Kit: H122KBIX

*Note: Requires adapter sleeve and encoder option for controller.

FILTER WHEEL AND SHUTTERS:

| Application | Adapter | Filter Wheel ^A | Shutter (on Filter Wheel) | Shutter (Stand Alone) |
|------------------|-------------|---------------------------|---------------------------|-----------------------|
| Excitation, 25mm | Please Call | HF110 | HF200HT | HF202HT |
| Excitation, 35mm | Please Call | HF108 | HF201HT | HF204HT |
| Emission | Please Call | HF110 | N/A | N/A |
| Transmitted | Please Call | N/A | N/A | HF204HT |

^A HF110 has ten positions, the HF108 has eight positions.

STAND ALONE CONTROLLER:

H30Z Focus only
 H30XY Stage only
 H30XYZ Stage and focus drive
 Autofocus: Replace “Z” with “A” e.g. H30A
 1 filter wheel, 3 shutters: Add “1” e.g. H30XYZ1
 2 filter wheel, 3 shutters: Add “2” e.g. H30XYZ2
 3 filter wheel, 3 shutters: Add “3” e.g. H30XYZ3
 3 shutter only: Add “5” e.g. H30XYZ5
 Encoder input: Add “E” e.g. H30XYE

Note: H130 Controllers include stage cable and PC RS232 cable.

PCI CARD CONTROLLER: (REQUIRES CUSTOMER SUPPLIED PC)

HP2PC1 PCI control for XY, focus, three filter wheels and analog 0-10V NanoScanZ Piezo control
 HP2ETL PCI slot adapter for encoders and TTL
 HP1ENC Encoder adapter cable

JOYSTICKS:

CS152Z Digipot Control Unit for Z only
 CS152V2 Joystick Control Unit for XY system
 CS152EF Joystick Control Unit for XY and digipot for Z
 CS152KB Programmable touch screen controller
 CS100K Manual keypad control for 2 filter wheels and 3 shutters

OLYMPUS IX50/IX70 (114MM X 75MM TRAVEL)

MOTORIZED STAGE (XY):

Stage Part Number: H107AENN
 Specimen Holders: H224R (1x3 slide holder)
 H223XR (well plate holder)
 H229 (variable petri dish holder)
 Limit Switches: Adjustable
 Ball Screws: 2mm pitch

ENCODED STAGE (XY):

Stage Part Number: H107AEN1* (0.1 µm resolution)
 Specimen Holders: H224R (1x3 slide holder)
 H223XR (well plate holder)
 H229 (variable petri dish holder)
 Limit Switches: Adjustable
 Ball Screws: 2mm pitch

*Note: Requires encoder option for controller.

Notes: 1. Other specimen holders available (see price list). Use “R” versions where available.
 2. 1mm pitch screws are available as an option.

MOTORIZED FOCUS CONTROL (Z):

Focus Motor: H122
 Focus Sleeve: H807
 Solid Coupler Kit: H122KON

FOCUS MOTOR WITH LINEAR ENCODER PROBE:

Focus Motor: H122EPK* (50 nanometer resolution)
 Focus Sleeve: H807
 Solid Coupler Kit: H122KON

*Note: Requires adapter sleeve and encoder option for controller.

FILTER WHEEL AND SHUTTERS:

| Application | Adapter | Filter Wheel ^A | Shutter (on Filter Wheel) | Shutter (Stand Alone) |
|------------------|---------|---------------------------|------------------------------|--------------------------|
| Excitation, 25mm | HF235 | HF110 | HF200HT | HF202HT |
| Excitation, 35mm | HF235 | HF108 | HF201HT | HF204HT |
| Emission | HF236 | HF110 | N/A | N/A |
| Transmitted | HF237* | N/A | N/A | HF204HT |

^A HF110 has ten positions, the HF108 has eight positions.

*Not available for IX51.

STAND ALONE CONTROLLER:

H30Z Focus only
 H30XY Stage only
 H30XYZ Stage and focus drive
 Autofocus: Replace “Z” with “A” e.g. H30A
 1 filter wheel, 3 shutters: Add “1” e.g. H30XYZ1
 2 filter wheel, 3 shutters: Add “2” e.g. H30XYZ2
 3 filter wheel, 3 shutters: Add “3” e.g. H30XYZ3
 3 shutter only: Add “5” e.g. H30XYZ5
 Encoder input: Add “E” e.g. H30XE

Note: H130 Controllers include stage cable and PC RS232 cable.

JOYSTICKS:

CS152Z Digipot Control Unit for Z only
 CS152V2 Joystick Control Unit for XY system
 CS152EF Joystick Control Unit for XY and digipot for Z
 CS152KB Programmable touch screen controller
 CS100K Manual keypad control for 2 filter wheels and 3 shutters

PCI CARD CONTROLLER: (REQUIRES CUSTOMER SUPPLIED PC)

HP2PC1 PCI control for XY, focus, three filter wheels and analog 0-10V NanoScanZ Piezo control
 HP2ETL PCI slot adapter for encoders and TTL
 HP1ENC Encoder adapter cable

OLYMPUS IX51/IX71 (114MM X 75MM TRAVEL)

MOTORIZED STAGE (XY):

Stage Part Number: H117P2IX
 Specimen Holders: H224R (1x3 slide holder)
 H223XR (well plate holder)
 H229 (variable petri dish holder)
 Limit Switches: Adjustable
 Ball Screws: 2mm pitch

ENCODED STAGE (XY):

Stage Part Number: H117E2IX* (0.1 µm resolution)
 Specimen Holders: H224R (1x3 slide holder)
 H223XR (well plate holder)
 H229 (variable petri dish holder)
 Limit Switches: Adjustable
 Ball Screws: 2mm pitch

*Note: Requires encoder option for controller.

Notes: 1. Other specimen holders available (see price list). Use “R” versions where available.
 2. 1mm pitch screws are available as an option.

MOTORIZED FOCUS CONTROL (Z):

Focus Motor: H122
 Focus Sleeve: H807
 Solid Coupler Kit: H122KBIX

FOCUS MOTOR WITH LINEAR ENCODER PROBE:

Focus Motor: H122EKIX* (50 nanometer resolution)
 Focus Sleeve: H807
 Solid Coupler Kit: H122KBIX

*Note: Requires adapter sleeve and encoder option for controller.

FILTER WHEEL AND SHUTTERS:

| Application | Adapter | Filter Wheel ^A | Shutter (on Filter Wheel) | Shutter (Stand Alone) |
|------------------|---------|---------------------------|------------------------------|--------------------------|
| Excitation, 25mm | HF235 | HF110 | HF200HT | HF202HT |
| Excitation, 35mm | HF235 | HF108 | HF201HT | HF204HT |
| Emission | HF236 | HF110 | N/A | N/A |
| Transmitted | HF237* | N/A | N/A | HF204HT |

^A HF110 has ten positions, the HF108 has eight positions.

*Not available for IX51.

STAND ALONE CONTROLLER:

H30Z Focus only
 H30XY Stage only
 H30XYZ Stage and focus drive
 Autofocus: Replace “Z” with “A” e.g. H30A
 1 filter wheel, 3 shutters: Add “1” e.g. H30XYZ1
 2 filter wheel, 3 shutters: Add “2” e.g. H30XYZ2
 3 filter wheel, 3 shutters: Add “3” e.g. H30XYZ3
 3 shutter only: Add “5” e.g. H30XYZ5
 Encoder input: Add “E” e.g. H30XE

Note: H130 Controllers include stage cable and PC RS232 cable.

PCI CARD CONTROLLER: (REQUIRES CUSTOMER SUPPLIED PC)

HP2PC1 PCI control for XY, focus, three filter wheels and analog 0-10V NanoScanZ Piezo control
 HP2ETL PCI slot adapter for encoders and TTL
 HP1ENC Encoder adapter cable

JOYSTICKS:

CS152Z Digipot Control Unit for Z only
 CS152V2 Joystick Control Unit for XY system
 CS152EF Joystick Control Unit for XY and digipot for Z
 CS152KB Programmable touch screen controller
 CS100K Manual keypad control for 2 filter wheels and 3 shutters

OLYMPUS IX81/IX81ZDC (114MM X 75MM TRAVEL)

MOTORIZED STAGE (XY):

Stage Part Number: H117P2IX
Specimen Holders: H224R (1x3 slide holder)
H223XR (well plate holder)
H229 (variable petri dish holder)
Limit Switches: Adjustable
Ball Screws: 2mm pitch

ENCODED STAGE (XY):

Stage Part Number: H117E2IX* (0.1 µm resolution)
Specimen Holders: H224R (1x3 slide holder)
H223XR (well plate holder)
H229 (variable petri dish holder)
Limit Switches: Adjustable
Ball Screws: 2mm pitch

*Note: Requires encoder option for controller.

Notes: 1. Other specimen holders available (see price list). Use “R” versions where available.
2. 1mm pitch screws are available as an option.

MOTORIZED FOCUS CONTROL (Z):

Microscope has built-in focus control. Prior focus control is not available on this microscope.

FILTER WHEEL AND SHUTTERS:

| Application | Adapter | Filter Wheel [^] | Shutter (on Filter Wheel) | Shutter (Stand Alone) |
|------------------|---------|---------------------------|------------------------------|--------------------------|
| Excitation, 25mm | HF235 | HF110 | HF200HT | HF202HT |
| Excitation, 35mm | HF235 | HF108 | HF201HT | HF204HT |
| Emission | HF236 | HF110 | N/A | N/A |
| Transmitted | HF237 | N/A | N/A | HF204HT |

[^] HF110 has ten positions, the HF108 has eight positions.

STAND ALONE CONTROLLER:

H30XY Stage only
1 filter wheel, 3 shutters: Add “1” e.g. H30XY1
2 filter wheel, 3 shutters: Add “2” e.g. H30XY2
3 filter wheel, 3 shutters: Add “3” e.g. H30XY3
3 shutter only: Add “5” e.g. H30XY5
Encoder input: Add “E” e.g. H30XYE

PCI CARD CONTROLLER: (REQUIRES CUSTOMER SUPPLIED PC)

HP2PC1 PCI control for XY, focus, three filter wheels and analog 0-10V NanoScanZ Piezo control
HP2ETL PCI slot adapter for encoders and TTL
HP1ENC Encoder adapter cable

Note: H130 Controllers include stage cable and PC RS232 cable.

JOYSTICKS:

CS152V2 Joystick Control Unit for XY system
CS152KB Programmable touch screen controller
CS100K Manual keypad control for 2 filter wheels and 3 shutters

MOTORIZED STAGE (XY):

Stage Part Number: H105AFNN (2mm pitch ball screw)
Stage Part Number: H105BFNN (5mm pitch ball screw)
Specimen Holders: H231 (Solid aluminum plate)
Limit Switches: Adjustable

ENCODED STAGE (XY):

Stage Part Number: H105AFN1* (0.1 µm resolution)
Stage Part Number: H105BFN2* (0.5 µm resolution)
Specimen Holders: H231 (Solid aluminum plate)
Limit Switches: Adjustable

*Note: Requires encoder option for controller.

Notes: 1. Other specimen holders available (see price list).

MOTORIZED FOCUS CONTROL (Z):

Focus Motor: H122
Focus Sleeve: H807
Solid Coupler Kit: H122KON

FILTER WHEEL AND SHUTTERS:

Please call Prior Scientific for more information.

STAND ALONE CONTROLLER:

H30XY Stage only
1 filter wheel, 3 shutters: Add "1" e.g. H30XY1
2 filter wheel, 3 shutters: Add "2" e.g. H30XY2
3 filter wheel, 3 shutters: Add "3" e.g. H30XY3
3 shutter only: Add "5" e.g. H30XY5
Encoder input: Add "E" e.g. H30XYE

PCI CARD CONTROLLER: (REQUIRES CUSTOMER SUPPLIED PC)

HP2PC1 PCI control for XY, focus, three filter wheels and analog 0-10V NanoScanZ Piezo control
HP2ETL PCI slot adapter for encoders and TTL
HP1ENC Encoder adapter cable

Note: H130 Controllers include stage cable and PC RS232 cable.

JOYSTICKS:

CS152V2 Joystick Control Unit for XY system
CS152KB Programmable touch screen controller
CS100K Manual keypad control for 2 filter wheels and 3 shutters

MOTORIZED STAGE (XY):

Stage Part Number: H116ARNN (2mm pitch)
Stage Part Number: H116BRNN (5mm pitch)
Specimen Holders: H232 (Solid aluminum plate)
Limit Switches: Fixed

ENCODED STAGE (XY):

Stage Part Number: H116ARN1* (0.1 micron resolution)
Stage Part Number: H116BRN2* (0.5 micron resolution)
Specimen Holders: H232 (Solid aluminum plate)
Limit Switches: Fixed

*Note: Requires encoder option for controller.

Notes: 1. Other specimen holders available (see price list).

MOTORIZED FOCUS CONTROL (Z):

Focus Motor: H122
Focus Sleeve: H807
Solid Coupler Kit: H122KON

FILTER WHEEL AND SHUTTERS:

Please call Prior Scientific for more information.

STAND ALONE CONTROLLER:

H30Z Focus only
H30XY Stage only
H30XYZ Stage and focus drive
Autofocus: Replace "Z" with "A" e.g. H30A
1 filter wheel, 3 shutters: Add "1" e.g. H30XYZ1
2 filter wheel, 3 shutters: Add "2" e.g. H30XYZ2
3 filter wheel, 3 shutters: Add "3" e.g. H30XYZ3
3 shutter only: Add "5" e.g. H30XYZ5
Encoder input: Add "E" e.g. H30XYE

Note: H130 Controllers include stage cable and PC RS232 cable.

PCI CARD CONTROLLER: (REQUIRES CUSTOMER SUPPLIED PC)

HP2PC1 PCI control for XY, focus, three filter wheels and analog 0-10V NanoScanZ Piezo control
HP2ETL PCI slot adapter for encoders and TTL
HP1ENC Encoder adapter cable

JOYSTICKS:

CS152Z Digipot Control Unit for Z only
CS152V2 Joystick Control Unit for XY system
CS152EF Joystick Control Unit for XY and Digipot for Z
CS152KB Programmable touch screen controller
CS100K Manual keypad control for 2 filter wheels and 3 shutters

OLYMPUS MX50L (256MM X 215MM TRAVEL)

MOTORIZED STAGE (XY 200MM):

Stage Part Number: H116ARNN (2mm pitch)
Stage Part Number: H116BRNN (5mm pitch)
Specimen Holders: H232 (Solid aluminum plate)
Limit Switches: Fixed

ENCODED STAGE (XY 200MM):

Stage Part Number: H116ARN1* (0.1 micron resolution)
Stage Part Number: H116BRN2* (0.5 micron resolution)
Specimen Holders: H232 (Solid aluminum plate)
Limit Switches: Fixed

*Note: Requires encoder option for controller.

Notes: 1. Other specimen holders available (see price list).

MOTORIZED STAGE (XY 300MM):

Stage Part Number: H112ARNN (2mm pitch)
Stage Part Number: H112BRNN (5mm pitch)
Specimen Holders: H233
Limit Switches: Fixed

ENCODED STAGE (XY 300MM):

Stage Part Number: H112ARN1* (0.1 micron resolution)
Stage Part Number: H112BRN2* (0.5 micron resolution)
Specimen Holders: H233
Limit Switches: Fixed

*Note: Requires encoder option for controller.

MOTORIZED FOCUS CONTROL (Z):

Focus Motor: H122
Focus Sleeve: H807
Solid Coupler Kit: H122KON

FILTER WHEEL AND SHUTTERS:

Please call Prior Scientific for more information.

STAND ALONE CONTROLLER:

H30Z Focus only
H30XY Stage only
H30XYZ Stage and focus drive
Autofocus: Replace "Z" with "A" e.g. H30A
1 filter wheel, 3 shutters: Add "1" e.g. H30XYZ1
2 filter wheel, 3 shutters: Add "2" e.g. H30XYZ2
3 filter wheel, 3 shutters: Add "3" e.g. H30XYZ3
3 shutter only: Add "5" e.g. H30XYZ5
Encoder input: Add "E" e.g. H30XYE

Note: H130 Controllers include stage cable and PC RS232 cable.

PCI CARD CONTROLLER: (REQUIRES CUSTOMER SUPPLIED PC)

HP2PC1 PCI control for XY, focus, three filter wheels and analog 0-10V NanoScanZ Piezo control
HP2ETL PCI slot adapter for encoders and TTL
HP1ENC Encoder adapter cable

JOYSTICKS:

CS152Z Digipot Control Unit for Z only
CS152V2 Joystick Control Unit for XY system
CS152EF Joystick Control Unit for XY and Digipot for Z
CS152KB Programmable touch screen controller
CS100K Manual keypad control for 2 filter wheels and 3 shutters

MOTORIZED STAGE (XY):

Stage Part Number: H116ARNN (2mm pitch)
Stage Part Number: H116BRNN (5mm pitch)
Specimen Holders: H232 (Solid aluminum plate)
Limit Switches: Fixed

ENCODED STAGE (XY):

Stage Part Number: H116ARN1* (0.1 micron resolution)
Stage Part Number: H116BRN2* (0.5 micron resolution)
Specimen Holders: H232 (Solid aluminum plate)
Limit Switches: Fixed

*Note: Requires encoder option for controller.

Notes: 1. Other specimen holders available (see price list).

MOTORIZED FOCUS CONTROL (Z):

Focus Motor: H122
Focus Sleeve: H807
Solid Coupler Kit: H122KBIX

FILTER WHEEL AND SHUTTERS:

Please call Prior Scientific for more information.

STAND ALONE CONTROLLER:

H30Z Focus only
H30XY Stage only
H30XYZ Stage and focus drive
Autofocus: Replace "Z" with "A" e.g. H30A
1 filter wheel, 3 shutters: Add "1" e.g. H30XYZ1
2 filter wheel, 3 shutters: Add "2" e.g. H30XYZ2
3 filter wheel, 3 shutters: Add "3" e.g. H30XYZ3
3 shutter only: Add "5" e.g. H30XYZ5
Encoder input: Add "E" e.g. H30XYE

Note: H130 Controllers include stage cable and PC RS232 cable.

PCI CARD CONTROLLER: (REQUIRES CUSTOMER SUPPLIED PC)

HP2PC1 PCI control for XY, focus, three filter wheels and analog 0-10V NanoScanZ Piezo control
HP2ETL PCI slot adapter for encoders and TTL
HP1ENC Encoder adapter cable

JOYSTICKS:

CS152Z Digipot Control Unit for Z only
CS152V2 Joystick Control Unit for XY system
CS152EF Joystick Control Unit for XY and Digipot for Z
CS152KB Programmable touch screen controller
CS100K Manual keypad control for 2 filter wheels and 3 shutters

MOTORIZED STAGE (XY):

Stage Part Number: H112ARNN (2mm pitch)
Stage Part Number: H112BRNN (5mm pitch)
Specimen Holders: H233
Limit Switches: Fixed

ENCODED STAGE (XY):

Stage Part Number: H112ARN1* (0.1 micron resolution)
Stage Part Number: H112BRN2* (0.5 micron resolution)
Specimen Holders: H233
Limit Switches: Fixed

*Note: Requires encoder option for controller.

Notes: 1. Other specimen holders available (see price list).

MOTORIZED FOCUS CONTROL (Z):

Focus Motor: H122
Focus Sleeve: H807
Solid Coupler Kit: H122KBIX

FILTER WHEEL AND SHUTTERS:

Please call Prior Scientific for more information.

STAND ALONE CONTROLLER:

H30Z Focus only
H30XY Stage only
H30XYZ Stage and focus drive
Autofocus: Replace "Z" with "A" e.g. H30A
1 filter wheel, 3 shutters: Add "1" e.g. H30XYZ1
2 filter wheel, 3 shutters: Add "2" e.g. H30XYZ2
3 filter wheel, 3 shutters: Add "3" e.g. H30XYZ3
3 shutter only: Add "5" e.g. H30XYZ5
Encoder input: Add "E" e.g. H30XYE

PCI CARD CONTROLLER: (REQUIRES CUSTOMER SUPPLIED PC)

HP2PC1 PCI control for XY, focus, three filter wheels and analog 0-10V NanoScanZ Piezo control
HP2ETL PCI slot adapter for encoders and TTL
HP1ENC Encoder adapter cable

Note: H130 Controllers include stage cable and PC RS232 cable.

JOYSTICKS:

CS152Z Digipot Control Unit for Z only
CS152V2 Joystick Control Unit for XY system
CS152EF Joystick Control Unit for XY and Digipot for Z
CS152KB Programmable touch screen controller
CS100K Manual keypad control for 2 filter wheels and 3 shutters

MOTORIZED STAGE (XY):

Stage Part Number: H112ARNN (2mm pitch)
 Stage Part Number: H112BRNN (5mm pitch)
 Specimen Holders: H233
 Limit Switches: Fixed

ENCODED STAGE (XY):

Stage Part Number: H112ARN1* (0.1 micron resolution)
 Stage Part Number: H112BRN2* (0.5 micron resolution)
 Specimen Holders: H233
 Limit Switches: Fixed

*Note: Requires encoder option for controller.

Notes: 1. Other specimen holders available (see price list).

MOTORIZED FOCUS CONTROL (Z):

Focus Motor: H122
 Focus Sleeve: H807
 Solid Coupler Kit: H122KON

FILTER WHEEL AND SHUTTERS:

Please call Prior Scientific for more information.

STAND ALONE CONTROLLER:

H30Z Focus only
 H30XY Stage only
 H30XYZ Stage and focus drive
 Autofocus: Replace "Z" with "A" e.g. H30A
 1 filter wheel, 3 shutters: Add "1" e.g. H30XYZ1
 2 filter wheel, 3 shutters: Add "2" e.g. H30XYZ2
 3 filter wheel, 3 shutters: Add "3" e.g. H30XYZ3
 3 shutter only: Add "5" e.g. H30XYZ5
 Encoder input: Add "E" e.g. H30XYE

Note: H130 Controllers include stage cable and PC RS232 cable.

PCI CARD CONTROLLER: (REQUIRES CUSTOMER SUPPLIED PC)

HP2PC1 PCI control for XY, focus, three filter wheels and analog 0-10V NanoScanZ Piezo control
 HP2ETL PCI slot adapter for encoders and TTL
 HP1ENC Encoder adapter cable

JOYSTICKS:

CS152Z Digipot Control Unit for Z only
 CS152V2 Joystick Control Unit for XY system
 CS152EF Joystick Control Unit for XY and Digipot for Z
 CS152KB Programmable touch screen controller
 CS100K Manual keypad control for 2 filter wheels and 3 shutters

OLYMPUS SZX12 STEREO (114MM X 75MM TRAVEL)

MOTORIZED STAGE (XY):

Stage Part Number: H101ANNN
Specimen Holders: H224 (1x3 slide holder)
Limit Switches: Adjustable
Ball Screws: 2mm pitch

ENCODED STAGE (XY):

Stage Part Number: H101ANN1* (0.1 µm resolution)
Specimen Holders: H224 (1x3 slide holder)
Limit Switches: Adjustable
Ball Screws: 2mm pitch

*Note: Requires encoder option for controller.

- Notes: 1. Requires Olympus adapter part number S-X125 supplied by others.
2. Other specimen holders available (see price list).
3. 1mm pitch screws are available as an option.

MOTORIZED FOCUS CONTROL (Z):

Focus Motor: H122SZX
Focus Sleeve: Included
Solid Coupler Kit: Included

FOCUS MOTOR WITH LINEAR ENCODER PROBE:

Not available.

FILTER WHEEL AND SHUTTERS:

| Application | Adapter | Filter Wheel ^Δ | Shutter (on Filter Wheel) | Shutter (Stand Alone) |
|------------------|---------|---------------------------|------------------------------|--------------------------|
| Excitation, 25mm | HF235 | HF110 | HF200HT | HF202HT |
| Excitation, 35mm | HF235 | HF108 | HF201HT | HF204HT |
| Emission | N/A | N/A | N/A | N/A |
| Transmitted | N/A | N/A | N/A | N/A |

^Δ HF110 has ten positions, the HF108 has eight positions.

STAND ALONE CONTROLLER:

H30Z Focus only
H30XY Stage only
H30XYZ Stage and focus drive
1 filter wheel, 3 shutters: Add "1" e.g. H30XYZ1
2 filter wheel, 3 shutters: Add "2" e.g. H30XYZ2
3 shutter only: Add "5" e.g. H30XYZ5
Encoder input: Add "E" e.g. H30XYE

Note: H130 Controllers include stage cable and PC RS232 cable.

PCI CARD CONTROLLER: (REQUIRES CUSTOMER SUPPLIED PC)

HP2PC1 PCI control for XY, focus, three filter wheels and analog 0-10V NanoScanZ Piezo control
HP2ETL PCI slot adapter for encoders and TTL
HP1ENC Encoder adapter cable

Note: PCI Controller should only be used for XY only systems.
For focus control, use stand alone H129 controller.

JOYSTICKS:

CS152Z Digipot Control Unit for Z only
CS152V2 Joystick Control Unit for XY system
CS152EF Joystick Control Unit for XY and Digipot for Z
CS152KB Programmable touch screen controller (H130 Only)
CS100K Manual keypad control for 2 filter wheels and 3 shutters (H130 Only)

OLYMPUS SZX16/MVX10 (114MM X 75MM TRAVEL)

MOTORIZED STAGE (XY):

Stage Part Number: H101ANNN
 Specimen Holders: H224 (1x3 slide holder)
 Limit Switches: Adjustable
 Ball Screws: 2mm pitch

ENCODED STAGE (XY):

Stage Part Number: H101ANN1* (0.1 µm resolution)
 Specimen Holders: H224 (1x3 slide holder)
 Limit Switches: Adjustable
 Ball Screws: 2mm pitch

*Note: Requires encoder option for controller.

- Notes: 1. Requires Olympus dovetail adapter supplied by others.
 2. Other specimen holders available (see price list).
 3. 1mm pitch screws are available as an option.

MOTORIZED FOCUS CONTROL (Z):

Focus Motor: H122SZX2
 Focus Sleeve: Included
 Solid Coupler Kit: Included

FOCUS MOTOR WITH LINEAR ENCODER PROBE:

Not available.

FILTER WHEEL AND SHUTTERS:

| Application | Adapter | Filter Wheel ^Δ | Shutter (on Filter Wheel) | Shutter (Stand Alone) |
|------------------|---------|---------------------------|------------------------------|--------------------------|
| Excitation, 25mm | HF235 | HF110 | HF200HT | HF202HT |
| Excitation, 35mm | HF235 | HF108 | HF201HT | HF204HT |
| Emission | N/A | N/A | N/A | N/A |
| Transmitted | N/A | N/A | N/A | N/A |

^Δ HF110 has ten positions, the HF108 has eight positions.

STAND ALONE CONTROLLER:

H30Z Focus only
 H30XY Stage only
 H30XYZ Stage and focus drive
 1 filter wheel, 3 shutters: Add "1" e.g. H30XYZ1
 2 filter wheel, 3 shutters: Add "2" e.g. H30XYZ2
 3 shutter only: Add "5" e.g. H30XYZ5
 Encoder input: Add "E" e.g. H30XYE

Note: H130 Controllers include stage cable and PC RS232 cable.

PCI CARD CONTROLLER: (REQUIRES CUSTOMER SUPPLIED PC)

HP2PC1 PCI control for XY, focus, three filter wheels and analog 0-10V NanoScanZ Piezo control
 HP2ETL PCI slot adapter for encoders and TTL
 HP1ENC Encoder adapter cable

Note: PCI Controller should only be used for XY only systems. For focus control, use stand alone H129 controller.

JOYSTICKS:

CS152Z Digipot Control Unit for Z only
 CS152V2 Joystick Control Unit for XY system
 CS152EF Joystick Control Unit for XY and Digipot for Z
 CS152KB Programmable touch screen controller (H130 Only)
 CS100K Manual keypad control for 2 filter wheels and 3 shutters (H130 Only)

MOTORIZED STAGE (XY):

Stage Part Number: H101ANNN
 Specimen Holders: H224 (1x3 slide holder)
 Limit Switches: Adjustable
 Ball Screws: 2mm pitch

ENCODED STAGE (XY):

Stage Part Number: H101ANN1* (0.1 µm resolution)
 Specimen Holders: H224 (1x3 slide holder)
 Limit Switches: Adjustable
 Ball Screws: 2mm pitch

*Note: Requires encoder option for controller.

Notes: 1. Other specimen holders available (see price list).
 2. 1mm pitch screws are available as an option

FOCUS MOTOR WITH LINEAR ENCODER PROBE:

Focus Motor: H122EKAXIM
 Focus Sleeve: Included

Note: Linear encoder probe is required with Axio Imager to achieve proper repeatability and accuracy.

FILTER WHEEL AND SHUTTERS:

| Application | Adapter | Filter Wheel ^A | Shutter (on Filter Wheel) | Shutter (Stand Alone) |
|------------------|-------------|---------------------------|------------------------------|--------------------------|
| Excitation, 25mm | HF240 | HF110 | HF200HT | HF202HT |
| Excitation, 35mm | HF240 | HF108 | HF201HT | HF204HT |
| Emission | HF243 | HF110 | N/A | N/A |
| Transmitted | Please Call | N/A | N/A | HF204HT |

^A HF110 has ten positions, the HF108 has eight positions.

STAND ALONE CONTROLLER:

H30Z Focus only
 H30XY Stage only
 H30XYZ Stage and focus drive
 Autofocus: Replace "Z" with "A" e.g. H30A
 1 filter wheel, 3 shutters: Add "1" e.g. H30XYZ1
 2 filter wheel, 3 shutters: Add "2" e.g. H30XYZ2
 3 filter wheel, 3 shutters: Add "3" e.g. H30XYZ3
 3 shutter only: Add "5" e.g. H30XYZ5
 Encoder input: Add "E" e.g. H30XYE

Note: H130 Controllers include stage cable and PC RS232 cable.

PCI CARD CONTROLLER: (REQUIRES CUSTOMER SUPPLIED PC)

HP2PC1 PCI control for XY, focus, three filter wheels and analog 0-10V NanoScanZ Piezo control
 HP2ETL PCI slot adapter for encoders and TTL
 HP1ENC Encoder adapter cable

JOYSTICKS:

CS152Z Digipot Control Unit for Z only
 CS152V2 Joystick Control Unit for XY system
 CS152EF Joystick Control Unit for XY and Digipot for Z
 CS152KB Programmable touch screen controller
 CS100K Manual keypad control for 2 filter wheels and 3 shutters

ZEISS AXIOPHOT 2 (114MM X 75MM TRAVEL)

MOTORIZED STAGE (XY):

Stage Part Number: H101ANNN
 Specimen Holders: H224PRV (1x3 slide holder)
 Limit Switches: Adjustable
 Ball Screws: 2mm pitch

ENCODED STAGE (XY):

Stage Part Number: H101ANN1* (0.1 µm resolution)
 Specimen Holders: H224PRV (1x3 slide holder)
 Limit Switches: Adjustable
 Ball Screws: 2mm pitch

*Note: Requires encoder option for controller.

Notes: 1. Other specimen holders available (see price list). Use "PRV" versions where available.
 2. 1mm pitch screws are available as an option

FOCUS MOTOR WITH LINEAR ENCODER PROBE:

Focus Motor: H122EK
 Focus Sleeve: H1713

Note: Linear encoder probe is required with Axiophot 2 to achieve proper repeatability and accuracy.

FILTER WHEEL AND SHUTTERS:

| Application | Adapter | Filter Wheel ^A | Shutter (on Filter Wheel) | Shutter (Stand Alone) |
|------------------|-------------|---------------------------|------------------------------|--------------------------|
| Excitation, 25mm | HF240 | HF110 | HF200HT | HF202HT |
| Excitation, 35mm | HF240 | HF108 | HF201HT | HF204HT |
| Emission | HF243 | HF110 | N/A | N/A |
| Transmitted | Please Call | N/A | N/A | HF204HT |

^A HF110 has ten positions, the HF108 has eight positions.

STAND ALONE CONTROLLER:

H30Z Focus only
 H30XY Stage only
 H30XYZ Stage and focus drive
 Autofocus: Replace "Z" with "A" e.g. H30A
 1 filter wheel, 3 shutters: Add "1" e.g. H30XYZ1
 2 filter wheel, 3 shutters: Add "2" e.g. H30XYZ2
 3 filter wheel, 3 shutters: Add "3" e.g. H30XYZ3
 3 shutter only: Add "5" e.g. H30XYZ5
 Encoder input: Add "E" e.g. H30XYE

Note: H130 Controllers include stage cable and PC RS232 cable.

PCI CARD CONTROLLER: (REQUIRES CUSTOMER SUPPLIED PC)

HP2PC1 PCI control for XY, focus, three filter wheels and analog 0-10V NanoScanZ Piezo control
 HP2ETL PCI slot adapter for encoders and TTL
 HP1ENC Encoder adapter cable

JOYSTICKS:

CS152Z Digipot Control Unit for Z only
 CS152V2 Joystick Control Unit for XY system
 CS152EF Joystick Control Unit for XY and Digipot for Z
 CS152KB Programmable touch screen controller
 CS100K Manual keypad control for 2 filter wheels and 3 shutters

ZEISS AXIOPLAN 2/IE/AXIOPLAN 2 IMAGING (114MM X 75MM TRAVEL)

MOTORIZED STAGE (XY):

Stage Part Number: H101ANNN
 Specimen Holders: H224PRV (1x3 slide holder)
 Limit Switches: Adjustable
 Ball Screws: 2mm pitch

ENCODED STAGE (XY):

Stage Part Number: H101ANN1* (0.1 µm resolution)
 Specimen Holders: H224PRV (1x3 slide holder)
 Limit Switches: Adjustable
 Ball Screws: 2mm pitch

*Note: Requires encoder option for controller.

Notes: 1. Other specimen holders available (see price list). Use “PRV” versions where available.
 2. 1mm pitch screws are available as an option.

FOCUS MOTOR WITH LINEAR ENCODER PROBE:

Focus Motor: H122EK (50 nanometer resolution)
 Focus Sleeve: H1713

Note: Linear encoder probe is required with Axioplan 2 to achieve proper repeatability and accuracy.

FILTER WHEEL AND SHUTTERS:

| Application | Adapter | Filter Wheel ^A | Shutter (on Filter Wheel) | Shutter (Stand Alone) |
|------------------|-------------|---------------------------|---------------------------|-----------------------|
| Excitation, 25mm | HF240 | HF110 | HF200HT | HF202HT |
| Excitation, 35mm | HF240 | HF108 | HF201HT | HF204HT |
| Emission | HF243 | HF110 | N/A | N/A |
| Transmitted | Please Call | N/A | N/A | HF204HT |

^A HF110 has ten positions, the HF108 has eight positions.

STAND ALONE CONTROLLER:

H30Z Focus only
 H30XY Stage only
 H30XYZ Stage and focus drive
 Autofocus: Replace “Z” with “A” e.g. H30A
 1 filter wheel, 3 shutters: Add “1” e.g. H30XYZ1
 2 filter wheel, 3 shutters: Add “2” e.g. H30XYZ2
 3 filter wheel, 3 shutters: Add “3” e.g. H30XYZ3
 3 shutter only: Add “5” e.g. H30XYZ5
 Encoder input: Add “E” e.g. H30XYE

Note: H130 Controllers include stage cable and PC RS232 cable.

PCI CARD CONTROLLER: (REQUIRES CUSTOMER SUPPLIED PC)

HP2PC1 PCI control for XY, focus, three filter wheels and analog 0-10V NanoScanZ Piezo control
 HP2ETL PCI slot adapter for encoders and TTL
 HP1ENC Encoder adapter cable

JOYSTICKS:

CS152Z Digipot Control Unit for Z only
 CS152V2 Joystick Control Unit for XY system
 CS152EF Joystick Control Unit for XY and Digipot for Z
 CS152KB Programmable touch screen controller
 CS100K Manual keypad control for 2 filter wheels and 3 shutters

ZEISS AXIOSKOP 2/AXIOSKOP 40 (114MM X 75MM TRAVEL)

MOTORIZED STAGE (XY):

Stage Part Number: H101ANNN
 Specimen Holders: H224PRV (1x3 slide holder)
 Limit Switches: Adjustable
 Ball Screws: 2mm pitch

ENCODED STAGE (XY):

Stage Part Number: H101ANN1* (0.1 µm resolution)
 Specimen Holders: H224PRV (1x3 slide holder)
 Limit Switches: Adjustable
 Ball Screws: 2mm pitch

*Note: Requires encoder option for controller.

Notes: 1. Other specimen holders available (see price list). Use "PRV" versions where available.
 2. 1mm pitch screws are available as an option.

FOCUS MOTOR WITH LINEAR ENCODER PROBE:

Focus Motor: H122EK
 Focus Sleeve: H1713

Note: Linear encoder probe is required with Axioskop 2/Axioskop 40 to achieve proper repeatability and accuracy.

FILTER WHEEL AND SHUTTERS:

| Application | Adapter | Filter Wheel ^A | Shutter (on Filter Wheel) | Shutter (Stand Alone) |
|------------------|--------------|---------------------------|------------------------------|--------------------------|
| Excitation, 25mm | HF240 | HF110 | HF200HT | HF202HT |
| Excitation, 35mm | HF240 | HF108 | HF201HT | HF204HT |
| Emission | *HF243/HF246 | HF110 | N/A | N/A |
| Transmitted | Please Call | N/A | N/A | HF204HT |

^A HF110 has ten positions, the HF108 has eight positions.

* HF236 mounts under camera, the HF246 mounts under the trinocular head.

STAND ALONE CONTROLLER:

H30Z Focus only
 H30XY Stage only
 H30XYZ Stage and focus drive
 Autofocus: Replace "Z" with "A" e.g. H30A
 1 filter wheel, 3 shutters: Add "1" e.g. H30XYZ1
 2 filter wheel, 3 shutters: Add "2" e.g. H30XYZ2
 3 filter wheel, 3 shutters: Add "3" e.g. H30XYZ3
 3 shutter only: Add "5" e.g. H30XYZ5
 Encoder input: Add "E" e.g. H30XYE

Note: H130 Controllers include stage cable and PC RS232 cable.

PCI CARD CONTROLLER: (REQUIRES CUSTOMER SUPPLIED PC)

HP2PC1 PCI control for XY, focus, three filter wheels and analog 0-10V NanoScanZ Piezo control
 HP2ETL PCI slot adapter for encoders and TTL
 HP1ENC Encoder adapter cable

JOYSTICKS:

CS152Z Digipot Control Unit for Z only
 CS152V2 Joystick Control Unit for XY system
 CS152EF Joystick Control Unit for XY and Digipot for Z
 CS152KB Programmable touch screen controller
 CS100K Manual keypad control for 2 filter wheels and 3 shutters

ZEISS AXIOSKOP 2FS (114MM X 75MM TRAVEL)

MOTORIZED STAGE (XY):

Stage Part Number: H101ANNN
Specimen Holders: H224PRV (1x3 slide holder)
Limit Switches: Adjustable
Ball Screws: 2mm pitch

ENCODED STAGE (XY):

Stage Part Number: H101ANN1* (0.1 µm resolution)
Specimen Holders: H224PRV (1x3 slide holder)
Limit Switches: Adjustable
Ball Screws: 2mm pitch

*Note: Requires encoder option for controller.

- Notes: 1. Other specimen holders available (see price list). Use "PRV" versions where available.
2. 1mm pitch screws are available as an option.

FOCUS MOTOR:

Focus Motor: Please call Prior Scientific for more information.
Focus Sleeve: Please call Prior Scientific for more information.

FILTER WHEEL AND SHUTTERS:

| Application | Adapter | Filter Wheel ^A | Shutter (on Filter Wheel) | Shutter (Stand Alone) |
|------------------|-------------|---------------------------|---------------------------|-----------------------|
| Excitation, 25mm | HF240 | HF110 | HF200HT | HF202HT |
| Excitation, 35mm | HF240 | HF108 | HF201HT | HF204HT |
| Emission | Please Call | HF110 | N/A | N/A |
| Transmitted | Please Call | N/A | N/A | HF204HT |

^A HF110 has ten positions, the HF108 has eight positions.

STAND ALONE CONTROLLER:

H30Z Focus only
H30XY Stage only
H30XYZ Stage and focus drive
Autofocus: Replace "Z" with "A" e.g. H30A
1 filter wheel, 3 shutters: Add "1" e.g. H30XYZ1
2 filter wheel, 3 shutters: Add "2" e.g. H30XYZ2
3 filter wheel, 3 shutters: Add "3" e.g. H30XYZ3
3 shutter only: Add "5" e.g. H30XYZ5
Encoder input: Add "E" e.g. H30XYE

Note: H130 Controllers include stage cable and PC RS232 cable.

PCI CARD CONTROLLER: (REQUIRES CUSTOMER SUPPLIED PC)

HP2PC1 PCI control for XY, focus, three filter wheels and analog 0-10V NanoScanZ Piezo control
HP2ETL PCI slot adapter for encoders and TTL
HP1ENC Encoder adapter cable

JOYSTICKS:

CS152Z Digipot Control Unit for Z only
CS152V2 Joystick Control Unit for XY system
CS152EF Joystick Control Unit for XY and Digipot for Z
CS152KB Programmable touch screen controller
CS100K Manual keypad control for 2 filter wheels and 3 shutters

ZEISS AXIOTRON (154MM X 154MM TRAVEL)

MOTORIZED STAGE (XY):

Stage Part Number: H105AFNN (2mm pitch)
Stage Part Number: H105BFNN (5mm pitch)
Specimen Holders: H231 (Solid aluminum plate)
Limit Switches: Adjustable

ENCODED STAGE (XY):

Stage Part Number: H105AFN1* (0.1 micron resolution)
Stage Part Number: H105BFN2* (0.5 micron resolution)
Specimen Holders: H231 (Solid aluminum plate)
Limit Switches: Adjustable

*Note: Requires encoder option for controller.

Notes: 1. Other specimen holders available (see price list).
2. 1mm pitch screws are available as an option.

MOTORIZED FOCUS CONTROL (Z):

Focus Motor: H122AXIO

FILTER WHEEL AND SHUTTERS:

Please call Prior Scientific for more information.

STAND ALONE CONTROLLER:

H30Z Focus only
H30XY Stage only
H30XYZ Stage and focus drive
Autofocus: Replace "Z" with "A" e.g. H30A
1 filter wheel, 3 shutters: Add "1" e.g. H30XYZ1
2 filter wheel, 3 shutters: Add "2" e.g. H30XYZ2
3 filter wheel, 3 shutters: Add "3" e.g. H30XYZ3
3 shutter only: Add "5" e.g. H30XYZ5
Encoder input: Add "E" e.g. H30XYE

Note: H130 Controllers include stage cable and PC RS232 cable.

PCI CARD CONTROLLER: (REQUIRES CUSTOMER SUPPLIED PC)

HP2PC1 PCI control for XY, focus, three filter wheels and analog 0-10V NanoScanZ Piezo control
HP2ETL PCI slot adapter for encoders and TTL
HP1ENC Encoder adapter cable

JOYSTICKS:

CS152Z Digipot Control Unit for Z only
CS152V2 Joystick Control Unit for XY system
CS152EF Joystick Control Unit for XY and Digipot for Z
CS152KB Programmable touch screen controller
CS100K Manual keypad control for 2 filter wheels and 3 shutters

ZEISS AXIOVERT 10/35/35M/405M (112MM X 70MM TRAVEL)

MOTORIZED STAGE (XY):

Stage Part Number: H107XVRT (2mm pitch)
Specimen Holders: H224R (1x3 slide holder)
H223R (well plate holder)
H229 (variable petri dish holder)
Limit Switches: Fixed

ENCODED STAGE (XY):

Not available.

Notes: 1. Other specimen holders available (see price list).
2. 1mm pitch screws are available as an option.

MOTORIZED FOCUS CONTROL (Z):

Focus Motor: H122AXIO

FILTER WHEEL AND SHUTTERS:

Please call Prior Scientific for more information.

STAND ALONE CONTROLLER:

H30Z Focus only
H30XY Stage only
H30XYZ Stage and focus drive
Autofocus: Replace "Z" with "A" e.g. H30A
1 filter wheel, 3 shutters: Add "1" e.g. H30XYZ1
2 filter wheel, 3 shutters: Add "2" e.g. H30XYZ2
3 filter wheel, 3 shutters: Add "3" e.g. H30XYZ3
3 shutter only: Add "5" e.g. H30XYZ5
Encoder input: Add "E" e.g. H30XYE

Note: H130 Controllers include stage cable and PC RS232 cable.

PCI CARD CONTROLLER: (REQUIRES CUSTOMER SUPPLIED PC)

HP2PC1 PCI control for XY, focus, three filter wheels and analog 0-10V NanoScanZ Piezo control
HP2ETL PCI slot adapter for encoders and TTL
HP1ENC Encoder adapter cable

JOYSTICKS:

CS152Z Digipot Control Unit for Z only
CS152V2 Joystick Control Unit for XY system
CS152EF Joystick Control Unit for XY and Digipot for Z
CS152KB Programmable touch screen controller
CS100K Manual keypad control for 2 filter wheels and 3 shutters

ZEISS AXIOVERT 25/25C/25CFI/40 (112MM X 70MM TRAVEL)

MOTORIZED STAGE (XY):

Stage Part Number: H107AINN

Specimen Holders: H224R (1x3 slide holder)
H223R (well plate holder)
H229 (variable petri dish holder)

Limit Switches: Adjustable

Ball Screws: 2mm pitch

Notes: 1. Other specimen holders available (see price list). Use “R” versions where available.
2. 1mm pitch screws are available as an option.

MOTORIZED FOCUS CONTROL (Z) WITH LINEAR ENCODER PROBE:

Focus Motor: H122EK40

Focus Sleeve: Included

Solid Coupler Kit: Included

FILTER WHEEL AND SHUTTERS:

| Application | Adapter | Filter Wheel ^A | Shutter (on Filter Wheel) | Shutter (Stand Alone) |
|------------------|-------------|---------------------------|------------------------------|--------------------------|
| Excitation, 25mm | HF240 | HF110 | HF200HT | HF202HT |
| Excitation, 35mm | HF240 | HF108 | HF201HT | HF204HT |
| Emission | Please Call | HF110 | N/A | N/A |
| Transmitted | Please Call | N/A | N/A | HF204HT |

^A HF110 has ten positions, the HF108 has eight positions.

STAND ALONE CONTROLLER:

H30XY Stage only
1 filter wheel, 3 shutters: Add “1” e.g. H30XY1
2 filter wheel, 3 shutters: Add “2” e.g. H30XY2
3 filter wheel, 3 shutters: Add “3” e.g. H30XY3
3 shutter only: Add “5” e.g. H30XY5
Encoder input: Add “E” e.g. H30XYE

Note: H130 Controllers include stage cable and PC RS232 cable.

PCI CARD CONTROLLER: (REQUIRES CUSTOMER SUPPLIED PC)

HP2PC1 PCI control for XY, focus, three filter wheels and analog 0-10V NanoScanZ Piezo control
HP2ETL PCI slot adapter for encoders and TTL
HP1ENC Encoder adapter cable

JOYSTICKS:

CS152V2 Joystick Control Unit for XY system
CS152KB Programmable touch screen controller
CS100K Manual keypad control for 2 filter wheels and 3 shutters

ZEISS AXIOVERT 25CA (112MM X 70MM TRAVEL)

MOTORIZED STAGE (XY):

Stage Part Number: H107AJNN
Specimen Holders: H224R (1x3 slide holder)
H223R (well plate holder)
H229 (variable petri dish holder)
Limit Switches: Adjustable
Ball Screws: 2mm pitch

Notes:

1. Other specimen holders available (see price list). Use “R” versions where available.
2. 1mm pitch screws are available as an option.

MOTORIZED FOCUS CONTROL (Z):

Motorized focus control is not available.

FILTER WHEEL AND SHUTTERS:

| Application | Adapter | Filter Wheel ^A | Shutter (on Filter Wheel) | Shutter (Stand Alone) |
|------------------|-------------|---------------------------|------------------------------|--------------------------|
| Excitation, 25mm | HF240 | HF110 | HF200HT | HF202HT |
| Excitation, 35mm | HF240 | HF108 | HF201HT | HF204HT |
| Emission | Please Call | HF110 | N/A | N/A |
| Transmitted | Please Call | N/A | N/A | HF204HT |

^A HF110 has ten positions, the HF108 has eight positions.

STAND ALONE CONTROLLER:

H30XY Stage only
1 filter wheel, 3 shutters: Add “1” e.g. H30XY1
2 filter wheel, 3 shutters: Add “2” e.g. H30XY2
3 filter wheel, 3 shutters: Add “3” e.g. H30XY3
3 shutter only: Add “5” e.g. H30XY5
Encoder input: Add “E” e.g. H30XYE

Note: H130 Controllers include stage cable and PC RS232 cable.

PCI CARD CONTROLLER: (REQUIRES CUSTOMER SUPPLIED PC)

HP2PC1 PCI control for XY, focus, three filter wheels and analog 0-10V NanoScanZ Piezo control
HP2ETL PCI slot adapter for encoders and TTL
HP1ENC Encoder adapter cable

JOYSTICKS:

CS152V2 Joystick Control Unit for XY system
CS152KB Programmable touch screen controller
CS100K Manual keypad control for 2 filter wheels and 3 shutters

MOTORIZED STAGE (XY):

Stage Part Number: H107AHNN
 Specimen Holders: H224R (1x3 slide holder)
 H223R (well plate holder)
 H229 (variable petri dish holder)

Limit Switches: Adjustable

Ball Screws: 2mm pitch

Notes: 1. Other specimen holders available (see price list). Use “R” versions where available.
 2. 1mm pitch screws are available as an option.

MOTORIZED FOCUS CONTROL (Z) WITH LINEAR ENCODER PROBE:

Focus Motor: H122EKZ1

Focus Sleeve: Included

Solid Coupler Kit: Included

FILTER WHEEL AND SHUTTERS:

| Application | Adapter | Filter Wheel ^A | Shutter (on Filter Wheel) | Shutter (Stand Alone) |
|------------------|-------------|---------------------------|------------------------------|--------------------------|
| Excitation, 25mm | HF240 | HF110 | HF200HT | HF202HT |
| Excitation, 35mm | HF240 | HF108 | HF201HT | HF204HT |
| Emission | Please Call | HF110 | N/A | N/A |
| Transmitted | Please Call | N/A | N/A | HF204HT |

^A HF110 has ten positions, the HF108 has eight positions.

STAND ALONE CONTROLLER:

H30XY Stage only
 1 filter wheel, 3 shutters: Add “1” e.g. H30XY1
 2 filter wheel, 3 shutters: Add “2” e.g. H30XY2
 3 filter wheel, 3 shutters: Add “3” e.g. H30XY3
 3 shutter only: Add “5” e.g. H30XY5
 Encoder input: Add “E” e.g. H30XYE

PCI CARD CONTROLLER: (REQUIRES CUSTOMER SUPPLIED PC)

HP2PC1 PCI control for XY, focus, three filter wheels and analog 0-10V NanoScanZ Piezo control
 HP2ETL PCI slot adapter for encoders and TTL
 HP1ENC Encoder adapter cable

Note: H130 Controllers include stage cable and PC RS232 cable.

JOYSTICKS:

CS152V2 Joystick Control Unit for XY system
 CS152KB Programmable touch screen controller
 CS100K Manual keypad control for 2 filter wheels and 3 shutters

ZEISS AXIOVERT 200 (114MM X 75MM TRAVEL)

MOTORIZED STAGE (XY):

Stage Part Number: H117P2X2
Specimen Holders: H224R (1x3 slide holder)
H223XR (well plate holder)
H229 (variable petri dish holder)
Limit Switches: Adjustable
Ball Screws: 2mm pitch

ENCODED STAGE (XY):

Stage Part Number: H117E2X2* (0.1 µm resolution)
Specimen Holders: H224R (1x3 slide holder)
H223XR (well plate holder)
H229 (variable petri dish holder)
Limit Switches: Adjustable
Ball Screws: 2mm pitch

*Note: Requires encoder option for controller.

Notes: 1. Other specimen holders available (see price list). Use “R” versions where available.
2. 1mm pitch screws are available as an option.

FOCUS MOTOR WITH LINEAR ENCODER PROBE:

Focus Motor: H122EZK*
Focus Sleeve: Included

*Notes: 1. Requires adapter sleeve and encoder option for controller.

2. Linear encoder probe is required with Axiovert 200 to achieve proper repeatability and accuracy.

FILTER WHEEL AND SHUTTERS:

| Application | Adapter | Filter Wheel ^A | Shutter (on Filter Wheel) | Shutter (Stand Alone) |
|------------------|---------|---------------------------|------------------------------|--------------------------|
| Excitation, 25mm | HF240 | HF110 | HF200HT | HF202HT |
| Excitation, 35mm | HF240 | HF108 | HF201HT | HF204HT |
| Emission | HF241 | HF110 | N/A | N/A |
| Transmitted | HF240 | N/A | N/A | HF204HT |

^A HF110 has ten positions, the HF108 has eight positions.

STAND ALONE CONTROLLER:

H30Z Focus only
H30XY Stage only
H30XYZ Stage and focus drive
Autofocus: Replace “Z” with “A” e.g. H30A
1 filter wheel, 3 shutters: Add “1” e.g. H30XYZ1
2 filter wheel, 3 shutters: Add “2” e.g. H30XYZ2
3 filter wheel, 3 shutters: Add “3” e.g. H30XYZ3
3 shutter only: Add “5” e.g. H30XYZ5
Encoder input: Add “E” e.g. H30XYE

Note: H130 Controllers include stage cable and PC RS232 cable.

JOYSTICKS:

CS152Z Digipot Control Unit for Z only
CS152V2 Joystick Control Unit for XY system
CS152EF Joystick Control Unit for XY and digipot for Z
CS152KB Programmable touch screen controller
CS100K Manual keypad control for 2 filter wheels and 3 shutters

PCI CARD CONTROLLER: (REQUIRES CUSTOMER SUPPLIED PC)

HP2PC1 PCI control for XY, focus, three filter wheels and analog 0-10V NanoScanZ Piezo control
HP2ETL PCI slot adapter for encoders and TTL
HP1ENC Encoder adapter cable

ZEISS AXIO OBSERVER (114MM X 75MM TRAVEL)

MOTORIZED STAGE (XY):

Stage Part Number: H117P2X2
 Specimen Holders: H224R (1x3 slide holder)
 H223XR (well plate holder)
 H229 (variable petri dish holder)
 Limit Switches: Adjustable
 Ball Screws: 2mm pitch

ENCODED STAGE (XY):

Stage Part Number: H117E2X2* (0.1 µm resolution)
 Specimen Holders: H224R (1x3 slide holder)
 H223XR (well plate holder)
 H229 (variable petri dish holder)
 Limit Switches: Adjustable
 Ball Screws: 2mm pitch

*Note: Requires encoder option for controller.

Notes: 1. Other specimen holders available (see price list). Use “R” versions where available.
 2. 1mm pitch screws are available as an option.

FOCUS MOTOR WITH LINEAR ENCODER PROBE:

Focus Motor: H122EZK*
 Focus Sleeve: Included

*Notes: 1. Requires encoder option for controller.

2. Linear encoder probe is required with Axiovert 200 to achieve proper repeatability and accuracy.

FILTER WHEEL AND SHUTTERS:

| Application | Adapter | Filter Wheel ^A | Shutter (on Filter Wheel) | Shutter (Stand Alone) |
|------------------|---------|---------------------------|------------------------------|--------------------------|
| Excitation, 25mm | HF240 | HF110 | HF200HT | HF202HT |
| Excitation, 35mm | HF240 | HF108 | HF201HT | HF204HT |
| Emission | HF241 | HF110 | N/A | N/A |
| Transmitted | HF240 | N/A | N/A | HF204HT |

^A HF110 has ten positions, the HF108 has eight positions.

STAND ALONE CONTROLLER:

H30Z Focus only
 H30XY Stage only
 H30XYZ Stage and focus drive
 Autofocus: Replace “Z” with “A” e.g. H30A
 1 filter wheel, 3 shutters: Add “1” e.g. H30XYZ1
 2 filter wheel, 3 shutters: Add “2” e.g. H30XYZ2
 3 filter wheel, 3 shutters: Add “3” e.g. H30XYZ3
 3 shutter only: Add “5” e.g. H30XYZ5
 Encoder input: Add “E” e.g. H30XYE

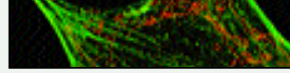
Note: H130 Controllers include stage cable and PC RS232 cable.

JOYSTICKS:

CS152Z Digipot Control Unit for Z only
 CS152V2 Joystick Control Unit for XY system
 CS152EF Joystick Control Unit for XY and digipot for Z
 CS152KB Programmable touch screen controller
 CS100K Manual keypad control for 2 filter wheels and 3 shutters

PCI CARD CONTROLLER: (REQUIRES CUSTOMER SUPPLIED PC)

HP2PC1 PCI control for XY, focus, three filter wheels and analog 0-10V NanoScanZ Piezo control
 HP2ETL PCI slot adapter for encoders and TTL
 HP1ENC Encoder adapter cable



PRIOR

Scientific

Prior Scientific Contact Information

| | | |
|---|--|---|
| Tom Freda President tfreda@prior.com (781) 878-8442 Ext. 3003 | Dennis Doherty National Sales Manager ddoherty@prior.com (781) 878-8442 Ext. 3017 | Mark Mistretta Sales Engineer mmistretta@prior.com (781) 878-8442 Ext. 3023 |
| James Hunt Sr. Product Marketing Manager Automation/Optical Products jhunt@prior.com (781) 878-8442 Ext. 3016 | | Mark Allard Manufacturing Engineer mallard@prior.com (781) 878-8442 Ext. 3009 |
| Donald Brown Optical Product Specialist dbrown@prior.com (781) 878-8442 Ext. 3015 | Daniel Leary Production & Service Mgr. dleary@prior.com (781) 878-8442 Ext. 3008 | John Commesso Marketing/Advertising jcommesso@prior.com (781) 878-8442 Ext. 3020 |

Please feel free to contact Prior Scientific if you have any questions regarding a specific product or part number.

**Prior Scientific, Inc.
80 Reservoir Park Drive
Rockland, MA. 02370**

Phone: 781-878-8442

Fax: 781-878-8736

Email: info@prior .com

Website: <http://www.prior.com>

